

**Content of Guideway Racks**

Code	Material	Type	Type	Shape	Teeth Treatment	Hardness	CP / Module	Grade DIN	Page
KASVGH-CP	SCM440	Straight	V Type Guideway Rack	Hexgan	Teeth Ground	Hardened HRC 53°-58°	CP / 5, 7.5, 10	DIN 6	P.28
KASVGH-CP-L	SCM440	Straight	V Type Guideway Rack	Hexgan	Teeth Ground	Hardened HRC 53°-58°	CP / 5, 7.5, 10	DIN 6	P.29
KCSVM-CP-L	S50C	Straight	V Type Guideway Rack	Hexgan	Milled	HRC 10~12°	CP / 5, 7.5, 10	DIN 8	P.30
KANVGH-00	SCM440	N/A	V Type Guideway	Hexgan	Ground	Hardened HRC 53°-58°	N/A	DIN 6	P.31
KANVGH-L	SCM440	N/A	V Type Guideway	Hexgan	Ground	Hardened HRC 53°-58°	N/A	DIN 6	P.32
KCNVM-L	S50C	N/A	V Type Guideway	Hexgan	Milled	HRC 10~12°	N/A	DIN 8	P.33
KASRGH-CP	SCM440	Straight	Guideway Rack	Rhombus	Teeth Ground	Hardened HRC 53°-58°	CP / 5, 7.5, 10	DIN 6	P.34
KASRGH-CP-L	SCM440	Straight	Guideway Rack	Rhombus	Teeth Ground	Hardened HRC 53°-58°	CP / 5, 7.5, 10	DIN 6	P.35
KCSRML-CP-L	S50C	Straight	Guideway Rack	Rhombus	Milled	HRC 10~12°	CP / 5, 7.5, 10	DIN 8	P.36
KANRGH-00	SCM440	N/A	Guideway	Rhombus	Ground	Hardened HRC 53°-58°	N/A	DIN 6	P.37
KANRGH-L	SCM440	N/A	Guideway	Rhombus	Ground	Hardened HRC 53°-58°	N/A	DIN 6	P.38
KCNRM-L	S50C	N/A	Guideway	Rhombus	Milled	HRC 10~12°	N/A	DIN 8	P.39
KAHVGH-L	SCM440	Helical	V Type Guideway Rack	Hexgan	Teeth Ground	Hardened HRC 53°-58°	M1.5, 2.5, 3	DIN 6	P.40
KCHVM-L	S50C	Helical	V Type Guideway Rack	Hexgan	Milled	HRC 10~12°	M1.5, 2.5, 3	DIN 8	P.41



### Guideway Rack Code Instruction

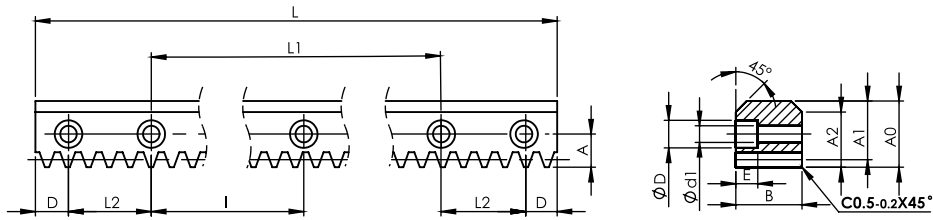


Material	Type	Shape	Teeth Treatment	Hardness	Circular Pitch	Length	Grade
M	S/H	V/R	G	H	CP	L	DIN
C=S50C M=SCM0440	S=Straight N=None H=Helical	V=V Type Bar R=Rhombus	G=Teeth Ground /Ground	H=Hardened	CP=Circular Pitch 00=No Teeth	10=1030 12=1230 or 1200	DIN 6 DIN 8

※Weight only for reference. Actual scale should be Weighing.



### KCSVM-CP-L-DIN8



NOTE:  
 1) ALL THE SURFACES IN THE RIGHT VIEW ARE TRUE.  
 2) ALL THE SURFACES ARE MILLED.

Dimension: mm

Guideway Racks

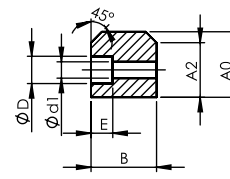
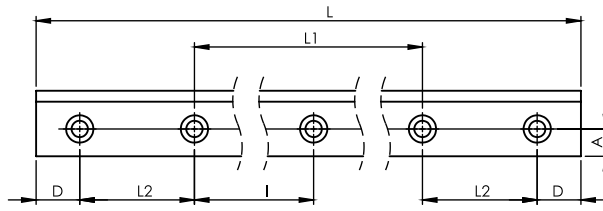
Series KCSVM-CP-L-DIN8 Straight V Type Milled Guideway Racks  
 Quality Grade DIN 8

Material S50C  
 Hardness: HRC 50~55°  
 Total Pitch Error:  $F_p/1000 \leq 0.060$  mm

Code	CP	No. of Teeth	L	L1	L2	Module	B	A0	A1	D	I	A	øD	ød1	E	A2	F <sub>ta</sub> kN	KG
KCSVM-CP050-1200-1-DIN8	5	240	1200	1100	35	1.5915	14.5	24.5	22.91	15	100	11.5	11	7	7	20.00	0.31	2.5
KCSVM-CP050-1200-2-DIN8	5	240	1200	1100	35	1.5915	19.5	29.5	27.91	15	100	14.0	15	9	9	23.50	0.42	4.0
KCSVM-CP075-1200-1-DIN8	7.5	160	1200	1100	35	2.3873	24.7	33.0	30.61	15	100	14.5	15	9	9	25.20	0.80	5.5
KCSVM-CP100-1200-1-DIN8	10	120	1200	1100	35	3.1831	34.6	46.6	43.42	15	100	18.0	18	11	11	36.70	1.50	11.4



### KCNVM-L-DIN8



Dimension: mm

NOTE:  
 1) ALL THE SURFACES IN THE RIGHT VIEW ARE TRUE.  
 2) ALL THE SURFACES ARE MILLED.

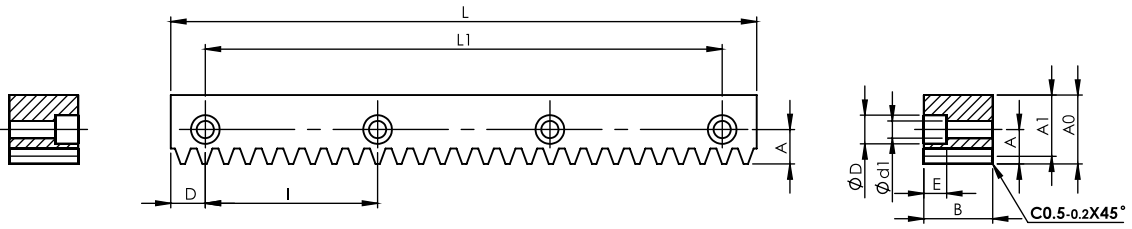
Series CNVM-L-DIN8 V Type Milled Guideway  
 Quality Grade DIN 8

Material S50C  
 Hardness: HRC 50~55°

Code	L	L1	L2	B	A0	D	I	A	$\phi D$	$\phi d1$	E	A2	KG
KCNVM-1200-1-DIN8	1200	1100	35	14.5	24.5	15	100	11.5	11	7	7	20.0	2.8
KCNVM-1200-2-DIN8	1200	1100	35	19.5	29.5	15	100	14.0	15	9	9	23.5	4.3
KCNVM-1200-3-DIN8	1200	1100	35	24.7	33.0	15	100	14.5	15	9	9	25.2	7.6
KCNVM-1200-4-DIN8	1200	1100	35	34.6	46.6	15	100	18.0	18	11	11	36.7	15.0



### KASRGH-CP-DIN6



NOTE:  
 1) ALL THE SURFACES IN LEFT AND RIGHT VIEW ARE TRUE.  
 2) ALL THE SURFACES HAVE Ra 0.8 SURFACE FINISH.  
 3) ALL THE SURFACES ARE GROUND.

Dimension: mm

Guideway Racks

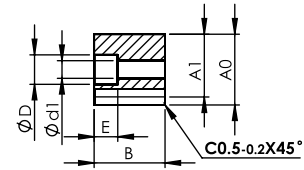
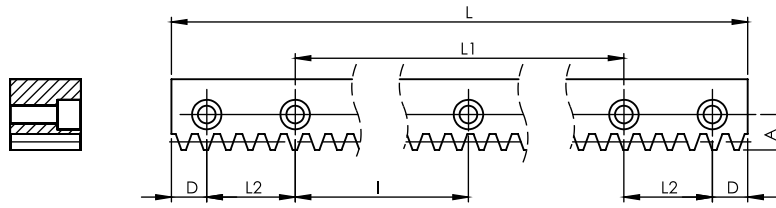
Series KASRGH-CP-DIN6 Ground Guideway Racks  
Quality Grade DIN 6

Material SCM440  
Hardness: HRC 50~55°  
4 Sides Ground and Teeth Ground after hardening.  
Total Pitch Error:  $F_p / 1000 \leq 0.036$  mm

Code	CP	No. of Teeth	L	L1	Module	B	A0	A1	D	I	A	øD	ød1	E	F <sub>ta</sub> kN	KG
KASRGH-CP05010-1-DIN6	5	206	1030	1000	1.5915	14.5	24.5	22.91	15	100	11.5	11	7	7	2.74	2.2
KASRGH-CP05010-2-DIN6	5	206	1030	1000	1.5915	19.5	29.5	27.91	15	100	14.0	15	9	9	3.68	3.8
KASRGH-CP07512-1-DIN6	7.5	164	1230	1200	2.3873	24.7	33.0	30.61	15	100	14.5	15	9	9	6.99	6.3
KASRGH-CP10012-1-DIN6	10	123	1230	1200	3.1831	34.6	46.6	43.42	15	100	18.0	18	11	11	13.06	12.5



KASRGH-CP-L-DIN6



Dimension: mm

NOTE:

- 1) ALL THE SURFACES IN THE LEFT AND RIGHT VIEW ARE TRUE.
- 2) ALL THE SURFACES HAVE Ra 0.8 SURFACE FINISH.
- 3) ALL THE SURFACES ARE GROUND.

Series KASRGH-CP-L-DIN6 Ground Guideway Racks  
Quality Grade DIN 6

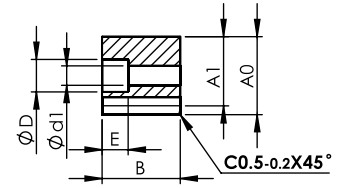
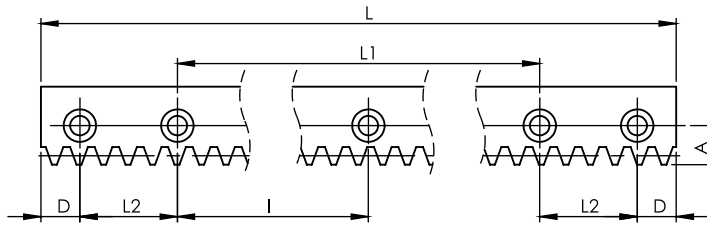
Material SCM440  
Hardness: HRC 50~55°  
4 Sides Ground and Teeth Ground after hardening.  
Total Pitch Error:  $F_p/1000 \leq 0.036$  mm

Code	CP	No. of Teeth	L	L1	L2	Module	B	A0	A1	D	I	A	$\varnothing D$	$\varnothing d1$	E	$F_{ta}$ kN	KG
KASRGH-CP050-1200-1-DIN6	5	240	1200	1100	35	1.5915	14.5	24.5	22.91	15	100	11.5	11	7	7	2.74	2.6
KASRGH-CP050-1200-2-DIN6	5	240	1200	1100	35	1.5915	19.5	29.5	27.91	15	100	14.0	15	9	9	3.68	4.6
KASRGH-CP075-1200-1-DIN6	7.5	160	1200	1100	35	2.3873	24.7	33.0	30.61	15	100	14.5	15	9	9	6.99	7.6
KASRGH-CP100-1200-1-DIN6	10	120	1200	1100	35	3.1831	34.6	46.6	43.42	15	100	18.0	18	11	11	13.06	15.0





### KCSRM-CP-L-DIN8



NOTE:  
 1) ALL THE SURFACES IN THE LEFT AND RIGHT VIEW ARE TRUE.  
 2) ALL THE SURFACES ARE MILLED.

Dimension: mm

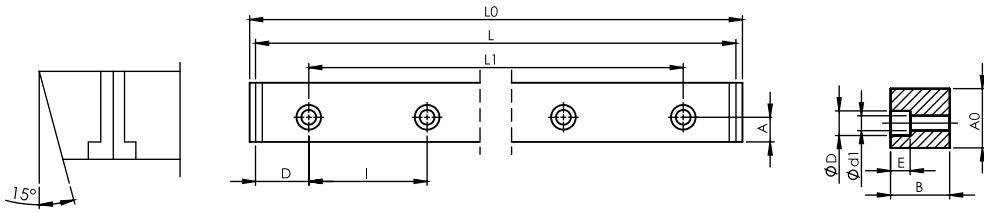
Series KCSRM-CP-L-DIN8 Milled Guideway Racks  
 Quality Grade DIN 8

Material S50C  
 Hardness: HRC 50~55°  
 Total Pitch Error:  $F_p/1000 \leq 0.060$  mm

Code	CP	No. of Teeth	L	L1	L2	Module	B	A0	A1	D	I	A	$\varnothing D$	$\varnothing d1$	E	$F_{ta}$ kN	KG
KCSRM-CP050-1200-1-DIN8	5	240	1200	1100	35	1.5915	14.5	24.5	22.91	15	100	11.5	11	7	7	0.31	2.6
KCSRM-CP050-1200-2-DIN8	5	240	1200	1100	35	1.5915	19.5	29.5	27.91	15	100	14.0	15	9	9	0.42	4.6
KCSRM-CP075-1200-1-DIN8	7.5	160	1200	1100	35	2.3873	24.7	33.0	30.61	15	100	14.5	15	9	9	0.80	7.6
KCSRM-CP100-1200-1-DIN8	10	120	1200	1100	35	3.1831	34.6	46.6	43.42	15	100	18.0	18	11	11	1.50	15.0



### KANRGH-00-DIN6



Dimension: mm

- NOTE:
- 1) ALL THE SURFACES IN LEFT AND RIGHT VIEW ARE TRUE.
  - 2) ALL THE SURFACES HAVE Ra 0.8 SURFACE FINISH.
  - 3) ALL THE SURFACES ARE GROUND.

Series KANRGH-00-DIN6 Ground Guideway  
Quality Grade DIN 6

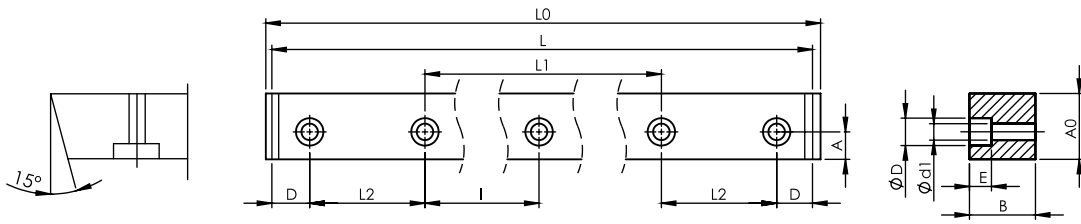
Material SCM440  
Hardness: HRC 50~55°  
4 Sides Ground after hardening.

Code	L0	L	L1	B	A0	D	I	A	øD	ød1	E	KG
KANRGH-001-DIN6	1033.89	1030	1000	14.5	24.5	15	100	11.5	11	7	7	2.5
KANRGH-002-DIN6	1035.23	1030	1000	19.5	29.5	15	100	14.0	15	9	9	4.0
KANRGH-003-DIN6	1236.62	1230	1200	24.7	33.0	15	100	14.5	15	9	9	6.8
KANRGH-004-DIN6	1239.27	1230	1200	34.6	46.6	15	100	18.0	18	11	11	13.4





KANRGH-L-DIN6



NOTE:  
 1) ALL THE SURFACES IN LEFT AND RIGHT VIEW ARE TRUE.  
 2) ALL THE SURFACES HAVE Ra 0.8 SURFACE FINISH.  
 3) ALL THE SURFACES ARE GROUND.

Dimension: mm

Guideway Racks

Series KANRGH-L-DIN6 Ground Guideway  
 Quality Grade DIN 6

Material SCM440  
 Hardness: HRC 50~55°  
 4 Sides Ground after hardening.

Code	L0	L	L1	L2	B	A0	D	I	A	øD	ød1	E	KG
KANRGH-1200-1-DIN6	1203.89	1200	1100	35	14.5	24.5	15	100	11.5	11	7	7	3.0
KANRGH-1200-2-DIN6	1205.23	1200	1100	35	19.5	29.5	15	100	14.0	15	9	9	4.8
KANRGH-1200-3-DIN6	1206.62	1200	1100	35	24.7	33.0	15	100	14.5	15	9	9	8.2
KANRGH-1200-4-DIN6	1209.27	1200	1100	35	34.6	46.6	15	100	18.0	18	11	11	16.1