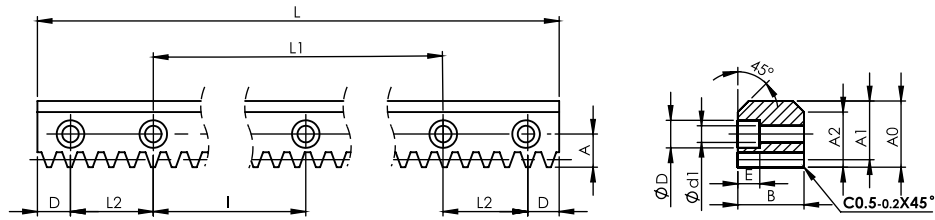




KCSVM-CP-L-DIN8



NOTE:
 1) ALL THE SURFACES IN THE RIGHT VIEW ARE TRUE.
 2) ALL THE SURFACES ARE MILLED.

Dimension: mm

Series KCSVM-CP-L-DIN8 Straight V Type Milled Guideway Racks
 Quality Grade DIN 8

Material S50C
 Hardness: HRC 50~55°
 Total Pitch Error: $F_p/1000 \leq 0.060$ mm

Code	CP	No. of Teeth	L	L1	L2	Module	B	A0	A1	D	I	A	φD	φd1	E	A2	F _{ta} kN	KG
KCSVM-CP050-1200-1-DIN8	5	240	1200	1100	35	1.5915	14.5	24.5	22.91	15	100	11.5	11	7	7	20.00	0.31	2.5
KCSVM-CP050-1200-2-DIN8	5	240	1200	1100	35	1.5915	19.5	29.5	27.91	15	100	14.0	15	9	9	23.50	0.42	4.0
KCSVM-CP075-1200-1-DIN8	7.5	160	1200	1100	35	2.3873	24.7	33.0	30.61	15	100	14.5	15	9	9	25.20	0.80	5.5
KCSVM-CP100-1200-1-DIN8	10	120	1200	1100	35	3.1831	34.6	46.6	43.42	15	100	18.0	18	11	11	36.70	1.50	11.4