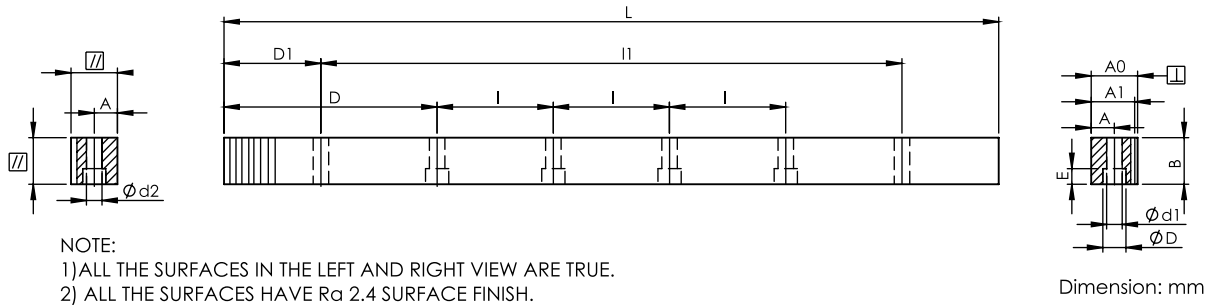




### KCSRMH-DIN10



Straight  
DIN

Series KCSRMH-DIN10 Straight Hardened Racks  
Quality Grade DIN 10

Material S50C  
Hardness: HRC 50~55°  
Surfaces: Sand-blasted or phosphated.  
Total Pitch Error:  $F_p/1000 \leq 0.1$  mm

Code	Module	L	No. of Teeth	B	A0	A1	D	I	No. of Holes	A	ød1	øD	E	D1	I1	ød2	f	F <sub>ta</sub> kN	KG
KCSRMH01510-DIN10	1.5	999.03	212	17	17	15.5	62.44	124.88	8	7	6	9.5	7	29	941.00	5.7	1.5	1.98	1.9
KCSRMH02010-DIN10	2	1005.31	160	24	24	22	62.83	125.66	8	8	7	11	7	31.3	942.70	5.7	2	3.73	3.9
KCSRMH03010-DIN10	3	1017.88	108	29	29	26	63.62	127.23	8	9	10	15	9	34.4	949.10	7.7	2	6.76	5.8
KCSRMH04010-DIN10	4	1005.31	80	39	39	35	62.83	125.66	8	12	10	15	9	37.5	930.30	7.7	2	12.12	10.3
KCSRMH05010-DIN10	5	1005.31	64	49	39	34	62.83	125.66	8	12	14	20	13	30.1	945.00	11.7	3	19.04	12.9
KCSRMH06010-DIN10	6	1017.88	54	59	49	43	63.62	127.23	8	16	18	26	17	31.4	955.00	15.7	3	27.51	19.7
KCSRMH08010-DIN10	8	1005.31	40	79	79	71	62.83	125.66	8	25	22	33	21	26.6	952.00	19.7	4	49.11	42.1
KCSRMH10010-DIN10	10	1005.31	32	99	99	89	62.83	125.66	8	32	33	48	32	125.7	753.96	19.7	4	76.93	66.1