



KCHM-DIN8

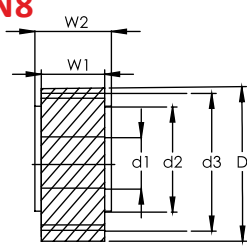


Fig. 1

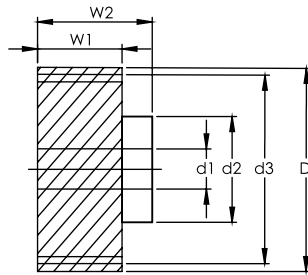
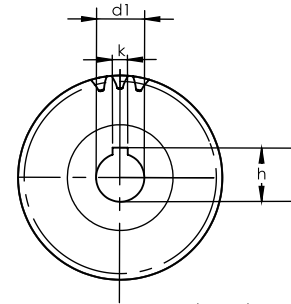


Fig. 2



Dimension: mm

NOTE:
 1) ALL THE SURFACES IN ALL THE VIEWS ARE TRUE.
 2) ALL THE SURFACES HAVE Rg 1.6 SURFACE FINISH.

Helical

DIN

Series KCHM-DIN8 Helical Soft Pinions

Quality Grade DIN 8

Material S45C / S50C

Left Hand Angle 19°31'42"

Code	Fig.	DIN	No. of Teeth	d1	d2	d3	D	W1	W2	k	h	F _{ta} kN	KG
Module 1.5													
KCHM0150201	1	-DIN8	20	11	25	31.83	34.83	20	22	4	12.8	0.51	0.1
KCHM0150202	1	-DIN8	20	13	25	31.83	34.83	20	22	5	15.3	0.51	0.1
KCHM0150203	1	-DIN8	20	14	25	31.83	34.83	20	22	5	16.3	0.51	0.1
KCHM0150204	1	-DIN8	20	16	25	31.83	34.83	20	22	5	18.3	0.51	0.1
KCHM0150211	2	-DIN8	21	16	30	33.42	36.42	20	46	5	18.3	0.61	0.3
Module 2													
KCHM0200181	1	-DIN8	18	16	25	38.197	42.2	28	30	5	18.3	0.86	0.2
KCHM0200201	1	-DIN8	20	19	30	42.44	46.4	28	30	6	21.8	0.96	0.3
KCHM0200202	2	-DIN8	20	19	30	42.44	46.4	28	56	6	21.8	0.96	0.6
KCHM0200203	1	-DIN8	20	20	30	42.44	46.4	28	30	6	22.8	0.96	0.3
KCHM0200204	2	-DIN8	20	22	36	42.44	46.4	28	56	6	24.8	0.96	0.6
KCHM0200205	1	-DIN8	20	22	30	42.44	46.4	28	30	6	24.8	0.96	0.3
KCHM0200211	1	-DIN8	21	16	25	44.56	48.6	28	30	5	18.3	1.01	0.3
KCHM0200212	2	-DIN8	21	22	36	44.56	48.6	28	30	6	24.8	1.01	0.3
KCHM0200221	1	-DIN8	22	19	30	46.69	50.7	28	30	6	21.8	1.19	0.4
KCHM0200222	2	-DIN8	22	19	30	46.69	50.7	28	56	6	21.8	1.19	0.7
KCHM0200223	1	-DIN8	22	22	30	46.69	50.7	28	30	6	24.8	1.19	0.4
KCHM0200224	2	-DIN8	22	22	36	46.69	50.7	28	56	6	24.8	1.19	0.7
KCHM0200251	1	-DIN8	25	19	30	53.05	57.1	28	30	6	21.8	1.37	0.5
KCHM0200252	2	-DIN8	25	19	30	53.05	57.1	28	56	6	21.8	1.37	0.8
KCHM0200253	1	-DIN8	25	20	30	53.05	57.1	28	30	6	22.8	1.37	0.5
KCHM0200254	1	-DIN8	25	22	30	53.05	57.1	28	30	6	24.8	1.37	0.5
KCHM0200255	2	-DIN8	25	22	36	53.05	57.1	28	56	6	24.8	1.37	0.8
KCHM0200256	1	-DIN8	25	25	36	53.05	57.1	28	30	6	27.8	1.37	0.5
KCHM0200281	1	-DIN8	28	19	30	59.42	63.4	28	30	6	21.8	1.54	0.6
KCHM0200282	2	-DIN8	28	19	30	59.42	63.4	28	56	6	21.8	1.54	1.0
KCHM0200283	1	-DIN8	28	22	30	59.42	63.4	28	30	6	24.8	1.54	0.6
KCHM0200284	2	-DIN8	28	22	36	59.42	63.4	28	56	6	24.8	1.54	1.0
KCHM0200285	1	-DIN8	28	35	48	59.42	63.4	28	30	10	38.3	1.54	0.6
KCHM0200301	1	-DIN8	30	16	25	63.66	67.7	28	30	5	18.3	1.66	0.6
KCHM0200302	1	-DIN8	30	20	30	63.66	67.7	28	30	6	22.8	1.66	0.6
KCHM0200303	2	-DIN8	30	22	36	63.66	67.7	28	56	6	24.8	1.66	1.2
KCHM0200304	1	-DIN8	30	25	36	63.66	67.7	28	30	8	28.3	1.66	0.6
KCHM0200305	1	-DIN8	30	30	45	63.66	67.7	28	30	8	33.3	1.66	0.6
KCHM0200306	2	-DIN8	30	30	50	63.66	67.7	28	60	8	33.3	1.66	1.3
KCHM0200307	2	-DIN8	30	32	55	63.66	67.7	28	65	10	35.3	1.66	1.4
KCHM0200321	1	-DIN8	32	20	30	67.91	71.9	28	30	6	22.8	1.78	0.7
KCHM0200322	1	-DIN8	32	22	30	67.91	71.9	28	30	6	24.8	1.78	0.7
KCHM0200323	2	-DIN8	32	22	36	67.91	71.9	28	56	6	27.8	1.78	1.3
KCHM0200324	1	-DIN8	32	25	36	67.91	71.9	28	30	8	28.3	1.78	0.7
KCHM0200325	1	-DIN8	32	35	48	67.91	71.9	28	30	10	38.3	1.78	0.7
KCHM0200361	1	-DIN8	36	35	48	76.39	80.4	28	30	10	38.3	2.29	0.9
KCHM0200391	2	-DIN8	39	32	55	82.76	86.8	28	65	10	35.3	2.49	2.3
KCHM0200401	1	-DIN8	40	35	48	84.88	88.9	28	30	10	38.3	2.56	1.1

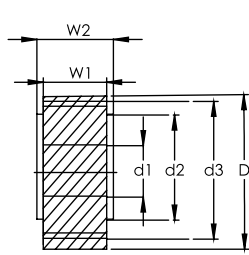


Fig. 1

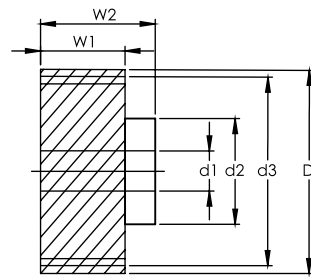
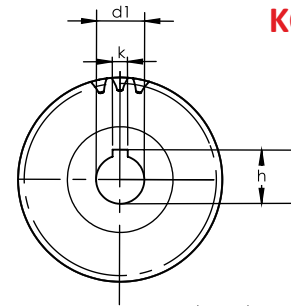


Fig. 2



Dimension: mm

KCHM-DIN8

NOTE:
 1) ALL THE SURFACES IN ALL THE VIEWS ARE TRUE.
 2) ALL THE SURFACES HAVE Rg 1.6 SURFACE FINISH.

Series KCHM-DIN8 Helical Soft Pinions
 Quality Grade DIN 8

Material S45C / S50C
 Left Hand Angle 19°31'42"



Code	Fig.	DIN	No. of Teeth	d1	d2	d3	D	W1	W2	k	h	F _{ta} kN	KG
Module 3													
KCHM0300201	2	-DIN8	20	22	36	63.66	69.7	28	56	6	24.8	1.61	1.0
KCHM0300202	2	-DIN8	20	25	44	63.66	69.7	28	60	8	28.3	1.61	1.1
KCHM0300203	1	-DIN8	20	30	45	63.66	69.7	28	30	8	33.3	1.61	0.5
KCHM0300204	2	-DIN8	20	30	50	63.66	69.7	28	60	8	33.3	1.61	1.1
KCHM0300205	2	-DIN8	20	32	55	63.66	69.7	28	65	10	35.3	1.61	1.2
KCHM0300206	1	-DIN8	20	35	48	63.66	69.7	28	30	10	38.3	1.61	0.5
KCHM0300221	1	-DIN8	22	25	36	70.03	76.0	28	30	8	28.3	2.03	0.6
KCHM0300222	1	-DIN8	22	30	45	70.03	76.0	28	30	8	33.3	2.03	0.6
KCHM0300223	2	-DIN8	22	32	55	70.03	76.0	28	65	10	35.3	2.03	1.4
KCHM0300224	1	-DIN8	22	35	48	70.03	76.0	28	30	10	38.3	2.03	0.6
KCHM0300225	2	-DIN8	22	40	62	70.03	76.0	28	65	12	43.3	2.03	1.4
KCHM0300251	2	-DIN8	25	22	36	79.58	85.6	28	56	6	24.8	2.32	1.5
KCHM0300252	1	-DIN8	25	25	36	79.58	85.6	28	30	8	28.3	2.32	0.8
KCHM0300253	2	-DIN8	25	25	44	79.58	85.6	28	60	8	28.3	2.32	1.6
KCHM0300254	1	-DIN8	25	30	45	79.58	85.6	28	30	8	33.3	2.32	0.8
KCHM0300255	2	-DIN8	25	30	50	79.58	85.6	28	60	8	33.3	2.32	1.6
KCHM0300256	2	-DIN8	25	32	55	79.58	85.6	28	65	10	35.3	2.32	1.8
KCHM0300257	1	-DIN8	25	35	48	79.58	85.6	28	30	10	38.3	2.32	0.8
KCHM0300258	2	-DIN8	25	35	55	79.58	85.6	28	65	10	38.3	2.32	1.8
KCHM0300259	1	-DIN8	25	40	70	79.58	85.6	28	50	12	43.3	2.32	1.4
KCHM03002510	2	-DIN8	25	40	62	79.58	85.6	28	65	12	43.3	2.32	1.8
KCHM0300281	2	-DIN8	28	32	55	89.13	95.1	28	65	10	35.3	2.62	2.2
KCHM0300282	2	-DIN8	28	40	62	89.13	95.1	28	65	12	43.3	2.62	2.2
KCHM0300321	2	-DIN8	32	32	55	101.86	107.85	28	65	10	35.3	3.02	2.8
KCHM0300322	2	-DIN8	32	40	62	101.86	107.85	28	65	12	43.3	3.02	2.8



KCHM-DIN8

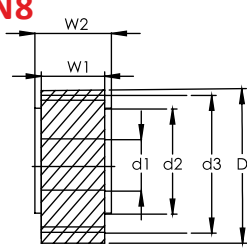


Fig. 1

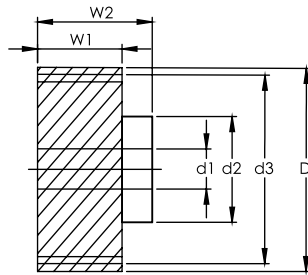
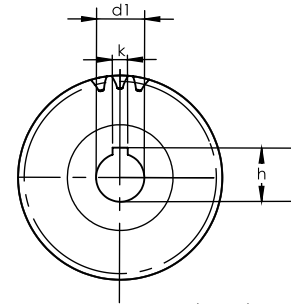


Fig. 2



Dimension: mm

NOTE:
 1) ALL THE SURFACES IN ALL THE VIEWS ARE TRUE.
 2) ALL THE SURFACES HAVE Rg 1.6 SURFACE FINISH.

Helical

DIN

Series KCHM-DIN8 Helical Soft Pinions
 Quality Grade DIN 8

Material S45C / S50C
 Left Hand Angle 19°31'42"

Code	Fig.	DIN	No. of Teeth	d1	d2	d3	D	W1	W2	k	h	F _{ta} kN	KG
Module 4													
KCHM0400151	1	-DIN8	15	35	52	63.66	71.7	40	50	10	38.3	2.01	0.8
KCHM0400181	2	-DIN8	18	32	55	76.39	84.4	40	75	10	35.3	2.74	1.6
KCHM0400201	1	-DIN8	20	35	52	84.88	92.9	40	50	10	38.3	3.07	1.3
KCHM0400202	1	-DIN8	20	45	65	84.88	92.9	40	50	14	48.8	3.07	1.3
KCHM0400211	2	-DIN8	21	32	55	89.13	97.1	40	75	10	35.3	3.24	2.2
KCHM0400212	2	-DIN8	21	35	55	89.13	97.1	40	75	10	38.3	3.24	2.2
KCHM0400213	2	-DIN8	21	40	62	89.13	97.1	40	75	12	43.3	3.24	2.2
KCHM0400214	2	-DIN8	21	45	68	89.13	97.1	40	75	14	48.8	3.24	2.2
KCHM0400221	1	-DIN8	22	35	52	93.37	101.4	40	50	10	38.3	3.40	1.6
KCHM0400222	1	-DIN8	22	45	65	93.37	101.4	40	50	14	48.8	3.40	1.6
KCHM0400241	2	-DIN8	24	32	55	101.86	109.9	40	75	10	35.3	4.25	2.8
KCHM0400242	2	-DIN8	24	35	55	101.86	109.9	40	75	10	38.3	4.25	2.8
KCHM0400243	2	-DIN8	24	40	62	101.86	109.9	40	75	12	43.3	4.25	2.8
KCHM0400244	2	-DIN8	24	45	68	101.86	109.9	40	75	14	48.8	4.25	2.8
KCHM0400245	2	-DIN8	24	55	80	101.86	109.9	40	80	16	59.3	4.25	3.0
KCHM0400251	1	-DIN8	25	35	52	106.1	114.1	40	50	10	38.3	4.44	2.0
KCHM0400252	1	-DIN8	25	45	65	106.1	114.1	40	50	14	48.8	4.44	2.0
KCHM0400253	2	-DIN8	25	55	80	106.1	114.1	40	80	16	59.3	4.44	3.2
Module 5													
KCHM0500181	2	-DIN8	18	45	68	95.49	105.5	50	85	14	48.8	4.29	2.9
KCHM0500241	2	-DIN8	24	45	68	127.32	137.3	50	85	14	48.8	6.64	4.9
KCHM0500242	2	-DIN8	24	55	80	127.32	137.3	50	90	16	59.3	6.64	5.2
KCHM0500243	2	-DIN8	24	75	110	127.32	137.3	50	110	20	79.9	6.64	6.4
Module 6													
KCHM0600201	2	-DIN8	20	55	80	127.32	139.3	60	100	16	59.3	6.91	6.0
KCHM0600202	2	-DIN8	20	75	110	127.32	139.3	60	120	20	79.9	6.91	7.2
KCHM0600251	2	-DIN8	25	55	80	159.16	171.2	60	100	16	59.3	9.99	9.0
KCHM0600252	2	-DIN8	25	75	110	159.16	171.2	60	120	20	79.9	9.99	10.8
Module 8													
KCHM0800181	2	-DIN8	18	75	110	152.79	168.8	80	140	20	79.9	10.98	12.3
KCHM0800202	2	-DIN8	20	85	125	169.8	185.8	80	145	22	90.4	12.29	15.4
Module 10													
KCHM1000201	2	-DIN8	20	85	125	212.21	232.2	100	165	22	90.4	19.20	27.4