



### KAHMH-DIN10

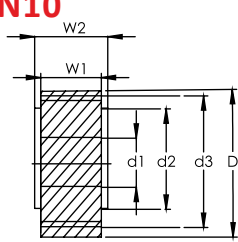


Fig. 1

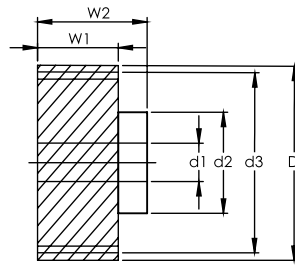
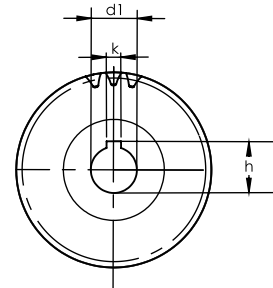


Fig. 2



Dimension: mm

NOTE:  
 1) ALL THE SURFACES IN ALL THE VIEWS ARE TRUE.  
 2) ALL THE SURFACES HAVE Rg 2.4 SURFACE FINISH.

Series KAHMH-DIN10 Helical Hardened Pinions  
 Quality Grade DIN 10

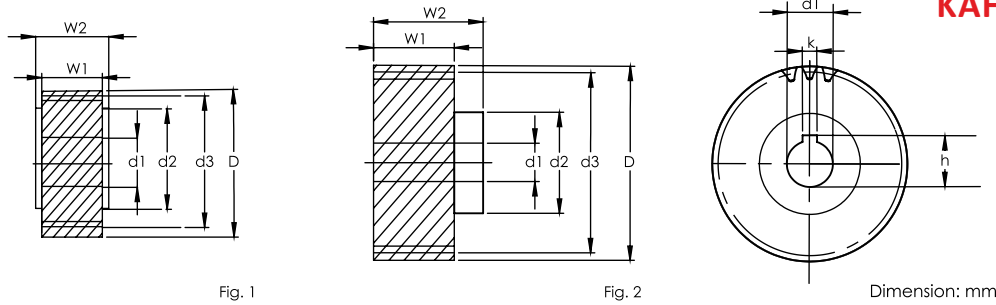
Material SCM415/SCM440  
 Left Hand Angle 19°31'42"  
 Hardness: HRC 50~55°  
 Surfaces: Sand-blasted



Code	Fig.	DIN	No. of Teeth	d1	d2	d3	D	W1	W2	k	h	F <sub>ta</sub> kN	KG
<b>Module 1.5</b>													
KAHMH0150201	1	-DIN10	20	11	25	31.83	34.83	20	22	4	12.8	2.93	0.1
KAHMH0150202	1	-DIN10	20	13	25	31.83	34.83	20	22	5	15.3	2.93	0.1
KAHMH0150203	1	-DIN10	20	14	25	31.83	34.83	20	22	5	16.3	2.93	0.1
KAHMH0150204	1	-DIN10	20	16	25	31.83	34.83	20	22	5	18.3	2.93	0.1
KAHMH0150211	2	-DIN10	21	16	30	33.42	36.42	20	46	5	18.3	3.47	0.3
<b>Module 2</b>													
KAHMH0200181	1	-DIN10	18	16	25	38.197	42.2	28	30	5	18.3	4.89	0.2
KAHMH0200201	1	-DIN10	20	19	30	42.44	46.4	28	30	6	21.8	5.48	0.3
KAHMH0200202	2	-DIN10	20	19	30	42.44	46.4	28	56	6	21.8	5.48	0.6
KAHMH0200203	1	-DIN10	20	20	30	42.44	46.4	28	30	6	22.8	5.48	0.3
KAHMH0200204	2	-DIN10	20	22	36	42.44	46.4	28	56	6	24.8	5.48	0.6
KAHMH0200205	1	-DIN10	20	22	30	42.44	46.4	28	30	6	24.8	5.48	0.3
KAHMH0200211	1	-DIN10	21	16	25	44.56	48.6	28	30	5	18.3	5.77	0.3
KAHMH0200212	2	-DIN10	21	22	36	44.56	48.6	28	30	6	24.8	5.77	0.3
KAHMH0200221	1	-DIN10	22	19	30	46.69	50.7	28	30	6	21.8	6.80	0.4
KAHMH0200222	2	-DIN10	22	19	30	46.69	50.7	28	56	6	21.8	6.80	0.7
KAHMH0200223	1	-DIN10	22	22	30	46.69	50.7	28	30	6	24.8	6.80	0.4
KAHMH0200224	2	-DIN10	22	22	36	46.69	50.7	28	56	6	24.8	6.80	0.7
KAHMH0200251	1	-DIN10	25	19	30	53.05	57.1	28	30	6	21.8	7.80	0.5
KAHMH0200252	2	-DIN10	25	19	30	53.05	57.1	28	56	6	21.8	7.80	0.8
KAHMH0200253	1	-DIN10	25	20	30	53.05	57.1	28	30	6	22.8	7.80	0.5
KAHMH0200254	1	-DIN10	25	22	30	53.05	57.1	28	30	6	24.8	7.80	0.5
KAHMH0200255	2	-DIN10	25	22	36	53.05	57.1	28	56	6	24.8	7.80	0.8
KAHMH0200256	1	-DIN10	25	25	36	53.05	57.1	28	30	6	27.8	7.80	0.5
KAHMH0200281	1	-DIN10	28	19	30	59.42	63.4	28	30	6	21.8	8.80	0.6
KAHMH0200282	2	-DIN10	28	19	30	59.42	63.4	28	56	6	21.8	8.80	1.0
KAHMH0200283	1	-DIN10	28	22	30	59.42	63.4	28	30	6	24.8	8.80	0.6
KAHMH0200284	2	-DIN10	28	22	36	59.42	63.4	28	56	6	24.8	8.80	1.0
KAHMH0200285	1	-DIN10	28	35	48	59.42	63.4	28	30	10	38.3	8.80	0.6
KAHMH0200301	1	-DIN10	30	16	25	63.66	67.7	28	30	5	18.3	9.47	0.6
KAHMH0200302	1	-DIN10	30	20	30	63.66	67.7	28	30	6	22.8	9.47	0.6
KAHMH0200303	2	-DIN10	30	22	36	63.66	67.7	28	56	6	24.8	9.47	1.2
KAHMH0200304	1	-DIN10	30	25	36	63.66	67.7	28	30	8	28.3	9.47	0.6
KAHMH0200305	1	-DIN10	30	30	45	63.66	67.7	28	30	8	33.3	9.47	0.6
KAHMH0200306	2	-DIN10	30	30	50	63.66	67.7	28	60	8	33.3	9.47	1.3
KAHMH0200307	2	-DIN10	30	32	55	63.66	67.7	28	65	10	35.3	9.47	1.4
KAHMH0200321	1	-DIN10	32	20	30	67.91	71.9	28	30	6	22.8	9.90	0.7
KAHMH0200322	1	-DIN10	32	22	30	67.91	71.9	28	30	6	24.8	9.90	0.7
KAHMH0200323	2	-DIN10	32	22	36	67.91	71.9	28	56	6	27.8	9.90	1.3
KAHMH0200324	1	-DIN10	32	25	36	67.91	71.9	28	30	8	28.3	9.90	0.7
KAHMH0200325	1	-DIN10	32	35	48	67.91	71.9	28	30	10	38.3	9.90	0.7
KAHMH0200361	1	-DIN10	36	35	48	76.39	80.4	28	30	10	38.3	10.15	0.9
KAHMH0200391	2	-DIN10	39	32	55	82.76	86.8	28	65	10	35.3	10.31	2.3
KAHMH0200401	1	-DIN10	40	35	48	84.88	88.9	28	30	10	38.3	10.36	1.1



KAHMH-DIN10



NOTE:  
 1) ALL THE SURFACES IN ALL THE VIEWS ARE TRUE.  
 2) ALL THE SURFACES HAVE Rg 2.4 SURFACE FINISH.

Dimension: mm

Helical

DIN

Series KAHMH-DIN10 Helical Hardened Pinions  
 Quality Grade DIN 10

Material SCM415/SCM440  
 Left Hand Angle 19°31'42"  
 Hardness: HRC 50~55°  
 Surfaces: Sand-blasted

Code	Fig.	DIN	No. of Teeth	d1	d2	d3	D	W1	W2	k	h	F <sub>ta</sub> kN	KG
<b>Module 3</b>													
KAHMH0300201	2	-DIN10	20	22	36	63.66	69.7	28	56	6	24.8	9.17	1.0
KAHMH0300202	2	-DIN10	20	25	44	63.66	69.7	28	60	8	28.3	9.17	1.1
KAHMH0300203	1	-DIN10	20	30	45	63.66	69.7	28	30	8	33.3	9.17	0.5
KAHMH0300204	2	-DIN10	20	30	50	63.66	69.7	28	60	8	33.3	9.17	1.1
KAHMH0300205	2	-DIN10	20	32	55	63.66	69.7	28	65	10	35.3	9.17	1.2
KAHMH0300206	1	-DIN10	20	35	48	63.66	69.7	28	30	10	38.3	9.17	0.5
KAHMH0300221	1	-DIN10	22	25	36	70.03	76	28	30	8	28.3	11.56	0.6
KAHMH0300222	1	-DIN10	22	30	45	70.03	76	28	30	8	33.3	11.56	0.6
KAHMH0300223	2	-DIN10	22	32	55	70.03	76	28	65	10	35.3	11.56	1.4
KAHMH0300224	1	-DIN10	22	35	48	70.03	76	28	30	10	38.3	11.56	0.6
KAHMH0300225	2	-DIN10	22	40	62	70.03	76	28	65	12	43.3	11.56	1.4
KAHMH0300251	2	-DIN10	25	22	36	79.58	85.6	28	56	6	24.8	13.25	1.5
KAHMH0300252	1	-DIN10	25	25	36	79.58	85.6	28	30	8	28.3	13.25	0.8
KAHMH0300253	2	-DIN10	25	25	44	79.58	85.6	28	60	8	28.3	13.25	1.6
KAHMH0300254	1	-DIN10	25	30	45	79.58	85.6	28	30	8	33.3	13.25	0.8
KAHMH0300255	2	-DIN10	25	30	50	79.58	85.6	28	60	8	33.3	13.25	1.6
KAHMH0300256	2	-DIN10	25	32	55	79.58	85.6	28	65	10	35.3	13.25	1.8
KAHMH0300257	1	-DIN10	25	35	48	79.58	85.6	28	30	10	38.3	13.25	0.8
KAHMH0300258	2	-DIN10	25	35	55	79.58	85.6	28	65	10	38.3	13.25	1.8
KAHMH0300259	1	-DIN10	25	40	70	79.58	85.6	28	50	12	43.3	13.25	1.4
KAHMH03002510	2	-DIN10	25	40	62	79.58	85.6	28	65	12	43.3	13.25	1.8
KAHMH0300281	2	-DIN10	28	32	55	89.13	95.1	28	65	10	35.3	14.37	2.2
KAHMH0300282	2	-DIN10	28	40	62	89.13	95.1	28	65	12	43.3	14.37	2.2
KAHMH0300321	2	-DIN10	32	32	55	101.86	107.85	28	65	10	35.3	14.84	2.8
KAHMH0300322	2	-DIN10	32	40	62	101.86	107.85	28	65	12	43.3	14.84	2.8



**KAHMH-DIN10**

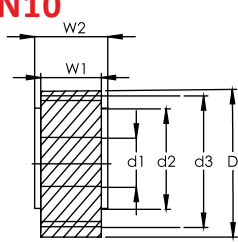


Fig. 1

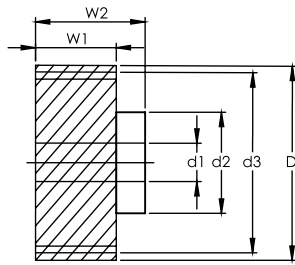
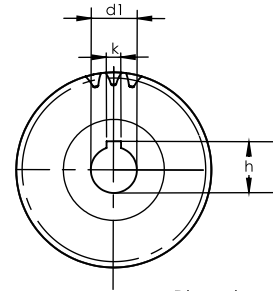


Fig. 2



Dimension: mm

NOTE:  
 1) ALL THE SURFACES IN ALL THE VIEWS ARE TRUE.  
 2) ALL THE SURFACES HAVE Rg 2.4 SURFACE FINISH.

Series KAHMH-DIN10 Helical Hardened Pinions  
 Quality Grade DIN 10

Material SCM415/SCM440  
 Left Hand Angle 19°31'42"  
 Hardness: HRC 50~55°  
 Surfaces: Sand-blasted



Code	Fig.	DIN	No. of Teeth	d1	d2	d3	D	W1	W2	k	h	F <sub>ta</sub> kN	KG
<b>Module 4</b>													
KAHMH0400151	1	-DIN10	15	35	52	63.66	71.7	40	50	10	38.3	11.49	0.8
KAHMH0400181	2	-DIN10	18	32	55	76.39	84.4	40	75	10	35.3	15.67	1.6
KAHMH0400201	1	-DIN10	20	35	52	84.88	92.9	40	50	10	38.3	17.55	1.3
KAHMH0400202	1	-DIN10	20	45	65	84.88	92.9	40	50	14	48.8	17.55	1.3
KAHMH0400211	2	-DIN10	21	32	55	89.13	97.1	40	75	10	35.3	18.49	2.2
KAHMH0400212	2	-DIN10	21	35	55	89.13	97.1	40	75	10	38.3	18.49	2.2
KAHMH0400213	2	-DIN10	21	40	62	89.13	97.1	40	75	12	43.3	18.49	2.2
KAHMH0400214	2	-DIN10	21	45	68	89.13	97.1	40	75	14	48.8	18.49	2.2
KAHMH0400221	1	-DIN10	22	35	52	93.37	101.4	40	50	10	38.3	19.43	1.6
KAHMH0400222	1	-DIN10	22	45	65	93.37	101.4	40	50	14	48.8	19.43	1.6
KAHMH0400241	2	-DIN10	24	32	55	101.86	109.9	40	75	10	35.3	24.27	2.8
KAHMH0400242	2	-DIN10	24	35	55	101.86	109.9	40	75	10	38.3	24.27	2.8
KAHMH0400243	2	-DIN10	24	40	62	101.86	109.9	40	75	12	43.3	24.27	2.8
KAHMH0400244	2	-DIN10	24	45	68	101.86	109.9	40	75	14	48.8	24.27	2.8
KAHMH0400245	2	-DIN10	24	55	80	101.86	109.9	40	80	16	59.3	24.27	3.0
KAHMH0400251	1	-DIN10	25	35	52	106.1	114.1	40	50	10	38.3	25.35	2.0
KAHMH0400252	1	-DIN10	25	45	65	106.1	114.1	40	50	14	48.8	25.35	2.0
MHMH0400253	2	-DIN10	25	55	80	106.1	114.1	40	80	16	59.3	25.35	3.2
<b>Module 5</b>													
KAHMH0500181	2	-DIN10	18	45	68	95.49	105.5	50	85	14	48.8	24.49	2.9
KAHMH0500241	2	-DIN10	24	45	68	127.32	137.3	50	85	14	48.8	37.93	4.9
KAHMH0500242	2	-DIN10	24	55	80	127.32	137.3	50	90	16	59.3	37.93	5.2
KAHMH0500243	2	-DIN10	24	75	110	127.32	137.3	50	110	20	79.9	37.93	6.4
<b>Module 6</b>													
KAHMH0600201	2	-DIN10	20	55	80	127.32	139.3	60	100	16	59.3	39.48	6.0
KAHMH0600202	2	-DIN10	20	75	110	127.32	139.3	60	120	20	79.9	39.48	7.2
KAHMH0600251	2	-DIN10	25	55	80	159.16	171.2	60	100	16	59.3	57.03	9.0
KAHMH0600252	2	-DIN10	25	75	110	159.16	171.2	60	120	20	79.9	57.03	10.8
<b>Module 8</b>													
KAHMH0800181	2	-DIN10	18	75	110	152.79	168.8	80	140	20	79.9	62.69	12.3
KAHMH0800201	2	-DIN10	20	85	125	169.8	185.8	80	145	22	90.4	70.18	15.4
<b>Module 10</b>													
KAHMH1000201	2	-DIN10	20	85	125	212.21	232.2	100	165	22	90.4	109.7	27.4