



KAHFGH-DIN6

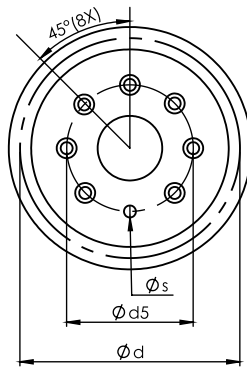


Fig. 1

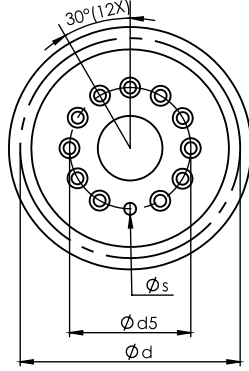


Fig. 2

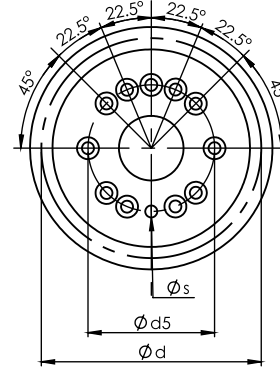
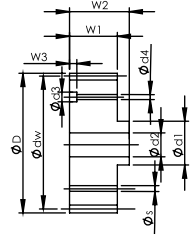


Fig. 3



Dimension: mm

Helical

DIN

Series KAHFGH-DIN6 Helical Flange Teeth Ground Pinions
Quality Grade DIN 6

Material SCM415/ SCM440
Hardness: HRC 50~55°
Teeth Ground after Hardening

Code	Fig.	DIN	No. of Teeth	X ⁰ Shift Coefficient	D	d Pitch Dia.	d ^w Working Pitch Dia.	d1	d2	d3	d4	d5	W1	W2	W3	F _{ta} kN
Module 2																
KAHFGH0200261	1	-DIN6	26	0.407	60.800	55.174	56.800	20.0	16.2	9.5	5.5	31.5	26	29	12.0	11.52
KAHFGH0200262	1	-DIN6	26	0.407	60.802	55.174	56.802	20.0	16.0	9.5	5.5	31.5	26	31	11.0	11.52
KAHFGH0200271	1	-DIN6	27	0.000	61.296	57.296	57.296	20.0	16.2	9.5	5.5	31.5	30	33	11.0	10.95
KAHFGH0200272	1	-DIN6	27	0.000	61.296	57.296	57.296	20.0	16.0	9.5	5.5	31.5	26	31	11.0	11.99
KAHFGH0200291	1	-DIN6	29	0.415	67.200	61.540	63.200	20.0	16.2	9.5	5.5	31.5	26	29	12.0	12.25
KAHFGH0200292	1	-DIN6	29	0.415	67.200	61.540	63.200	25.0	20.3	11.0	6.6	40.0	26	29	10.5	12.25
KAHFGH0200293	1	-DIN6	29	0.415	67.200	61.540	63.200	20.0	16.0	9.5	5.5	31.5	26	31	11.0	12.25
KAHFGH0200331	1	-DIN6	33	0.393	75.599	70.028	71.599	31.5	23.7	11.0	6.6	50.0	26	29	14.0	12.62
KAHFGH0200332	1	-DIN6	33	0.393	75.599	70.028	71.600	31.5	20.0	11.0	6.6	50.0	26	31	11.0	12.62
KAHFGH0200351	1	-DIN6	35	0.382	79.800	74.272	75.800	20.0	16.2	9.5	5.5	31.5	26	29	12.0	12.78
KAHFGH0200352	1	-DIN6	35	0.382	79.800	74.272	75.800	20.0	16.0	9.5	5.5	31.5	26	31	11.0	12.78
KAHFGH0200361	1	-DIN6	36	0.000	80.394	76.394	76.394	31.5	23.7	11.0	6.6	50.0	30	33	8.0	14.83
KAHFGH0200362	1	-DIN6	36	0.000	80.394	76.394	76.394	31.5	20.0	11.0	6.6	50.0	26	31	11.0	12.85
KAHFGH0200371	1	-DIN6	37	0.421	84.200	78.517	80.200	31.5	23.7	11.0	6.6	50.0	26	29	14.0	12.93
KAHFGH0200372	2	-DIN6	37	0.421	84.200	78.517	80.200	31.5	23.7	11.0	6.6	50.0	26	29	14.0	12.93
KAHFGH0200373	1	-DIN6	37	0.421	84.200	78.517	80.200	31.5	20.0	11.0	6.6	50.0	26	31	11.0	12.93
Module 3																
KAHFGH0300311	2	-DIN6	31	0.354	106.800	98.676	100.800	31.5	23.7	11.0	6.6	50.0	31	35	14.0	22.25
KAHFGH0300312	1	-DIN6	31	0.354	106.800	98.676	100.800	31.5	23.7	11.0	6.6	50.0	31	35	14.0	22.25
KAHFGH0300313	1	-DIN6	31	0.354	106.800	98.676	100.800	31.5	20.0	11.0	6.6	50.0	31	36	11.0	22.25
KAHFGH0300314	3	-DIN6	31	0.354	106.800	98.676	100.800	40.0	31.5	11.0	6.6	63.0	31	36	11.0	22.25
KAHFGH0300351	2	-DIN6	35	0.365	119.600	111.409	113.600	50.0	32.2	14.0	9.0	80.0	31	35	10.5	22.86
KAHFGH0300352	3	-DIN6	35	0.365	119.598	111.409	113.598	40.0	31.5	11.0	6.6	63.0	31	36	11.0	22.86
KAHFGH0300401	2	-DIN6	40	0.379	135.599	127.324	129.599	50.0	32.2	14.0	9.0	80.0	31	35	10.5	23.46
KAHFGH0300402	3	-DIN6	40	0.379	135.598	127.324	129.598	40.0	31.5	11.0	6.6	63.0	31	36	11.0	23.46
KAHFGH0300403	2	-DIN6	40	0.379	135.598	127.324	129.598	50.0	40.0	14.0	9.0	80.0	31	36	11.0	23.46
Module 4																
KAHFGH0400301	2	-DIN6	30	0.000	135.324	127.324	127.324	50.0	32.2	14.0	9.0	80.0	45	49	9.5	42.75
KAHFGH0400302	3	-DIN6	30	0.000	135.324	127.324	127.324	40.0	32.2	14.0	9.0	63.0	45	49	9.5	42.75
KAHFGH0400303	2	-DIN6	30	0.000	135.324	127.324	127.234	50.0	40.0	14.0	9.0	80.0	41	46	16.0	38.95
KAHFGH0400381	2	-DIN6	38	0.240	171.200	161.277	163.200	80.0	56.1	17.5	11.0	125.0	41	45	10.5	40.98
KAHFGH0400382	2	-DIN6	38	0.24	171.197	161.277	163.197	80.0	60.0	17.5	11.0	125.0	41	46	16.0	40.98
Module 5																
KAHFGH0500211	2	-DIN6	21	0.000	121.109	111.409	111.409	50.0	32.2	14.0	9.0	80.0	59	64	11.5	52.04
KAHFGH0500212	2	-DIN6	21	0.000	121.409	111.409	111.409	50.0	40.0	14.0	9.0	80.0	51	56	16.0	44.98
KAHFGH0500361	2	-DIN6	36	0.000	200.986	190.986	190.986	80.0	56.1	17.5	11.0	125.0	55	60	12.5	67.96
KAHFGH0500362	2	-DIN6	36	0.000	200.986	190.986	190.986	80.0	60.0	17.5	11.0	125.0	51	56	16.0	50.66

※Weight only for reference. Actual scale should be Weighing.