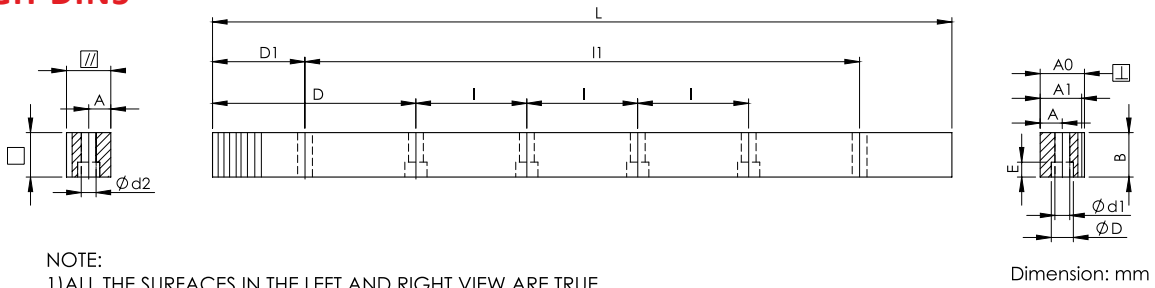




KCSRGH-DIN5



- NOTE:
- 1) ALL THE SURFACES IN THE LEFT AND RIGHT VIEW ARE TRUE.
 - 2) ALL THE SURFACES HAVE Ra 0.8 SURFACE FINISH.
 - 3) ALL THE SURFACES ARE GROUND.

Series KCSRGH-DIN5 Straight Teeth Ground Racks
Quality Grade DIN 5

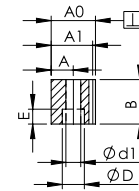
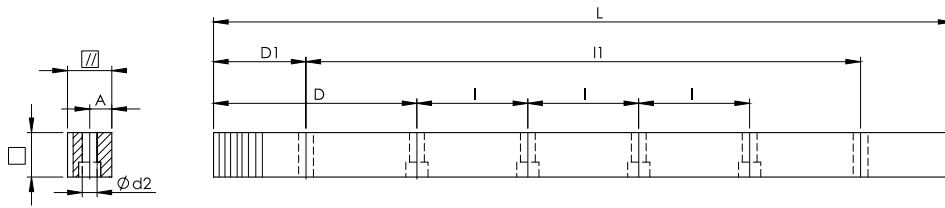
Material S50C
Hardness: HRC 50~55°
Ground on all sides after hardening.
Total Pitch Error: $F_p / 1000 \leq 0.026$ mm
Room Temperature is 25°C



Code	Module	L	No. of Teeth	B	A0	A1	D	I	No. of Holes	A	ød1	øD	E	D1	I1	ød2	f	F _{ta} kN	KG
KCSRGH02010-DIN5	2	1005.31	160	24	24	22	62.83	125.66	8	8	7	11	7	31.3	942.70	5.7	2	5.69	4.1
KCSRGH03010-DIN5	3	1017.88	108	29	29	26	63.61	127.23	8	9	10	11	9	34.4	949.10	7.7	2	10.32	6.1
KCSRGH04010-DIN5	4	1005.31	80	39	39	35	62.83	125.66	8	12	10	15	9	37.5	930.30	7.7	2	18.50	10.9
KCSRGH05010-DIN5	5	1005.31	64	49	39	34	62.83	125.66	8	12	14	17	13	37.5	945.00	11.7	3	29.06	17.2



KCSRGH-DIN6



Dimension: mm

- NOTE:
- 1) ALL THE SURFACES IN THE LEFT AND RIGHT VIEW ARE TRUE.
 - 2) ALL THE SURFACES HAVE Ra 0.8 SURFACE FINISH.
 - 3) ALL THE SURFACES ARE GROUND.

Straight
DIN

Series KCSRGH-DIN6 Straight Teeth Ground Racks
Quality Grade DIN 6

Material S50C
Hardness: HRC 50~55°
Ground on all sides after hardening.
Total Pitch Error: $F_p / 1000 \leq 0.036 \text{ mm}$
 $F_p / 2000 \leq 0.047 \text{ mm} (\leq 0.024/1000 \text{ mm})$

Code	Module	L	No. of Teeth	B	A0	A1	D	I	No. of Holes	A	ød1	øD	E	D1	I1	ød2	f	F _{ta} kN	KG
KCSRGH01505-DIN6	1.5	499.51	106	19	19	17.5	62.44	124.88	4	8	6	9.5	7	29.0	441.50	5.7	1.5	3.38	1.3
KCSRGH01510-DIN6	1.5	999.03	212	19	19	17.5	62.44	124.88	8	8	6	9.5	7	29.0	941.00	5.7	1.5	3.38	2.6
KCSRGH02005-DIN6	2	502.65	80	24	24	22	62.83	125.66	4	8	7	11	7	31.3	440.10	5.7	2	5.69	2.1
KCSRGH02010-DIN6	2	1005.31	160	24	24	22	62.83	125.66	8	8	7	11	7	31.3	942.70	5.7	2	5.69	4.1
KCSRGH02020-DIN6	2	2010.62	320	24	24	22	62.83	125.66	16	8	7	11	7	31.3	1948.00	5.7	2	5.69	8.2
KCSRGH02505-DIN6	2.5	502.65	64	24	24	21.5	62.83	125.66	4	9	7	11	7	31.3	440.10	5.7	2	7.12	2.1
KCSRGH02510-DIN6	2.5	1005.31	128	24	24	21.5	62.83	125.66	8	9	7	11	7	31.3	942.70	5.7	2	7.12	4.1
KCSRGH02520-DIN6	2.5	2010.62	256	24	24	21.5	62.83	125.66	16	9	7	11	7	31.3	1948.00	5.7	2	7.12	8.2
KCSRGH03005-DIN6	3	508.94	54	29	29	26	63.62	127.23	4	9	10	15	9	34.4	440.10	7.7	2	10.32	3.0
KCSRGH03010-DIN6	3	1017.88	108	29	29	26	63.62	127.23	8	9	10	15	9	34.4	949.10	7.7	2	10.32	6.1
KCSRGH03020-DIN6	3	2035.75	216	29	29	26	63.62	127.23	16	9	10	15	9	34.4	1967.00	7.7	2	10.32	12.2
KCSRGH04005-DIN6	4	502.65	40	39	39	35	62.83	125.66	4	12	10	15	9	37.5	427.70	7.7	2	18.50	5.4
KCSRGH04010-DIN6	4	1005.31	80	39	39	35	62.83	125.66	8	12	10	15	9	37.5	930.30	7.7	2	18.50	10.9
KCSRGH04020-DIN6	4	2010.62	160	39	39	35	62.83	125.66	16	12	10	15	9	37.5	1935.60	7.7	2	18.50	21.7
KCSRGH05005-DIN6	5	502.65	32	49	39	34	62.83	125.66	4	12	14	20	13	30.1	442.30	11.7	3	29.06	6.8
KCSRGH05010-DIN6	5	1005.31	64	49	39	34	62.83	125.66	8	12	14	20	13	30.1	945.00	11.7	3	29.06	13.7
KCSRGH05020-DIN6	5	2010.62	128	49	39	34	62.83	125.66	16	12	14	20	13	30.1	1950.40	11.7	3	29.06	27.3
KCSRGH06005-DIN6	6	508.94	27	59	49	43	63.62	127.23	4	16	18	26	17	31.4	446.10	15.7	3	41.99	10.5
KCSRGH06010-DIN6	6	1017.88	54	59	49	43	63.62	127.23	8	16	18	26	17	31.4	955.00	15.7	3	41.99	20.9
KCSRGH06020-DIN6	6	2035.75	108	59	49	43	63.62	127.23	16	16	18	26	17	31.4	1973.00	15.7	3	41.99	41.8
KCSRGH08005-DIN6	8	502.65	20	79	79	71	62.83	125.66	4	25	22	33	21	26.6	449.45	19.7	4	74.96	22.3
KCSRGH08005-DIN6	8	1005.31	40	79	79	71	62.83	125.66	8	25	22	33	21	26.6	952.00	19.7	4	74.96	44.6
KCSRGH08020-DIN6	8	2010.61	80	79	79	71	62.83	125.66	16	25	22	33	21	26.6	1957.40	19.7	4	74.96	89.1