



### KASGH-DIN6

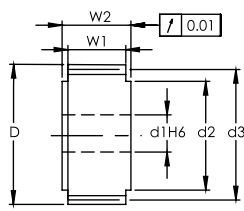


Fig. 1

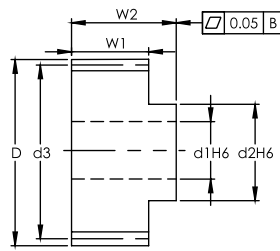
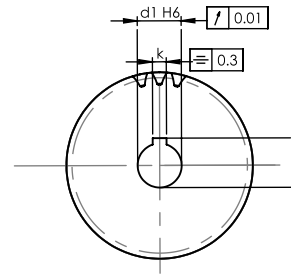


Fig. 2



Dimension: mm

NOTE:  
 1) ALL THE SURFACES IN ALL THE VIEWS ARE TRUE.  
 2) ALL THE SURFACES HAVE R<sub>a</sub> 0.8 SURFACE FINISH.  
 3) ALL THE SURFACES ARE GROUND.

Straight

DIN

#### Series KASGH-DIN6 Straight Teeth Ground Pinions Quality Grade DIN 6

Material SCM415/SCM440  
 Hardness: HRC 50~55°  
 Teeth Ground after Hardening

Code	Fig.	DIN	No. of Teeth	d1	d2	d3	D	W1	W2	k	h	F <sub>ta</sub> kN	KG
<b>Module 2</b>													
KASGH0200161	1	-DIN6	16	15	25	32	36	28	30	5	17.3	3.32	0.2
KASGH0200181	1	-DIN6	18	15	30	36	40	28	30	5	17.3	4.04	0.2
KASGH0200182	1	-DIN6	18	20	25	36	40	28	30	6	22.8	4.04	0.2
KASGH0200201	1	-DIN6	20	15	25	40	44	28	30	6	17.8	4.49	0.3
KASGH0200202	1	-DIN6	20	19	30	40	44	28	30	6	21.8	4.49	0.3
KASGH0200203	2	-DIN6	20	19	30	40	44	28	56	6	21.8	4.49	0.5
KASGH0200204	1	-DIN6	20	20	30	40	44	28	30	6	22.8	4.49	0.3
KASGH0200205	1	-DIN6	20	22	30	40	44	28	30	6	24.8	4.49	0.3
KASGH0200206	2	-DIN6	20	22	36	40	44	28	56	6	24.8	4.49	0.5
KASGH0200221	1	-DIN6	22	15	25	44	48	28	30	5	17.3	4.94	0.3
KASGH0200222	1	-DIN6	22	19	30	44	48	28	30	6	21.8	4.94	0.3
KASGH0200223	2	-DIN6	22	19	30	44	48	28	56	6	21.8	4.94	0.6
KASGH0200224	1	-DIN6	22	20	30	44	48	28	30	6	22.8	4.94	0.3
KASGH0200225	2	-DIN6	22	22	36	44	48	28	56	6	24.8	4.94	0.6
KASGH0200226	1	-DIN6	22	22	30	44	48	28	30	6	24.8	4.94	0.3
KASGH0200227	1	-DIN6	22	25	36	44	48	28	30	8	28.3	4.94	0.3
KASGH0200251	2	-DIN6	25	16	30	50	54	28	54	5	18.3	6.29	0.7
KASGH0200252	1	-DIN6	25	19	30	50	54	28	30	6	21.8	6.29	0.4
KASGH0200253	2	-DIN6	25	19	30	50	54	28	56	6	21.8	6.29	0.8
KASGH0200254	1	-DIN6	25	20	30	50	54	28	30	6	22.8	6.29	0.4
KASGH0200255	1	-DIN6	25	22	30	50	54	28	30	6	24.8	6.29	0.4
KASGH0200256	2	-DIN6	25	22	36	50	54	28	56	6	24.8	6.29	0.8
KASGH0200257	1	-DIN6	25	25	36	50	54	28	30	8	28.3	6.29	0.4
KASGH0200258	1	-DIN6	25	30	45	50	54	28	30	8	33.3	6.29	0.4
KASGH0200281	1	-DIN6	28	19	30	56	60	28	30	6	21.8	7.05	0.5
KASGH0200282	2	-DIN6	28	19	30	56	60	28	56	6	21.8	7.05	0.9
KASGH0200283	1	-DIN6	28	20	30	56	60	28	30	6	22.8	7.05	0.5
KASGH0200284	1	-DIN6	28	22	30	56	60	28	30	6	24.8	7.05	0.5
KASGH0200285	2	-DIN6	28	22	36	56	60	28	56	6	24.8	7.05	0.9
KASGH0200286	1	-DIN6	28	25	36	56	60	28	30	8	28.3	7.05	0.5
KASGH0200287	1	-DIN6	28	30	45	56	60	28	30	8	33.3	7.05	0.5
KASGH0200288	2	-DIN6	28	30	50	56	60	28	60	8	33.3	7.05	1.0
KASGH0200289	1	-DIN6	28	35	48	56	60	28	30	10	38.3	7.05	0.5
KASGH0200321	2	-DIN6	32	16	30	64	68	28	54	5	18.3	8.05	1.2
KASGH0200322	1	-DIN6	32	20	30	64	68	28	30	6	22.8	8.05	0.6
KASGH0200323	1	-DIN6	32	22	30	64	68	28	30	6	24.8	8.05	0.6
KASGH0200324	2	-DIN6	32	22	36	64	68	28	56	6	24.8	8.05	1.2
KASGH0200325	1	-DIN6	32	25	36	64	68	28	30	8	28.3	8.05	0.6
KASGH0200326	1	-DIN6	32	30	45	64	68	28	30	8	33.3	8.05	0.6
KASGH0200327	2	-DIN6	32	30	50	64	68	28	60	8	33.3	8.05	1.3
KASGH0200328	2	-DIN6	32	32	55	64	68	28	65	10	35.3	8.05	1.4
KASGH0200329	1	-DIN6	32	35	48	64	68	28	30	10	38.3	8.05	0.6
KASGH0200361	1	-DIN6	36	20	30	72	76	28	30	6	22.8	10.31	0.8



KASGH-DIN6

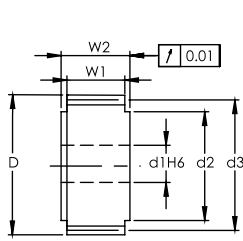


Fig. 1

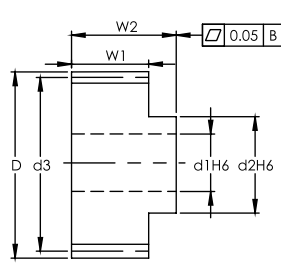
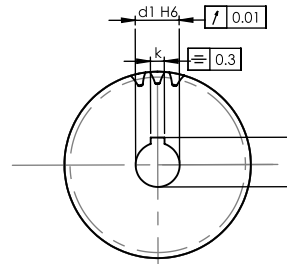


Fig. 2



Dimension: mm

NOTE:  
 1) ALL THE SURFACES IN ALL THE VIEWS ARE TRUE.  
 2) ALL THE SURFACES HAVE R<sub>a</sub> 0.8 SURFACE FINISH.  
 3) ALL THE SURFACES ARE GROUND.

Series KASGH-DIN6 Straight Teeth Ground Pinions  
 Quality Grade DIN 6

Material SCM415/SCM440  
 Hardness: HRC 50~55°  
 Teeth Ground after Hardening



Code	Fig.	DIN	No. of Teeth	d1	d2	d3	D	W1	W2	k	h	F <sub>ta</sub> kN	KG
<b>Module 2</b>													
KASGH0200362	1	-DIN6	36	25	36	72	76	28	30	8	28.3	10.31	0.8
KASGH0200363	1	-DIN6	36	30	45	72	76	28	30	8	33.3	10.31	0.8
KASGH0200364	1	-DIN6	36	35	48	72	76	28	30	10	38.3	10.31	0.8
KASGH0200365	2	-DIN6	36	40	62	72	76	28	65	12	43.3	10.31	1.7
KASGH0200366	1	-DIN6	36	45	58	72	76	28	30	14	48.8	10.31	0.8
KASGH0200401	1	-DIN6	40	15	36	80	84	28	30	5	17.3	11.45	1.0
KASGH0200402	1	-DIN6	40	20	30	80	84	28	30	6	22.8	11.45	1.0
KASGH0200403	1	-DIN6	40	25	36	80	84	28	30	8	28.3	11.45	1.0
KASGH0200404	1	-DIN6	40	30	45	80	84	28	30	8	33.3	11.45	1.0
KASGH0200405	2	-DIN6	40	32	55	80	84	28	65	10	35.3	11.45	2.1
KASGH0200406	1	-DIN6	40	35	48	80	84	28	30	10	38.3	11.45	1.0
KASGH0200407	2	-DIN6	40	40	62	80	84	28	65	12	43.3	11.45	2.1
KASGH0200408	1	-DIN6	40	45	58	80	84	28	30	14	48.8	11.45	1.0
KASGH0200409	2	-DIN6	40	45	68	80	84	28	65	14	48.8	11.45	2.1
KASGH0200451	1	-DIN6	45	20	30	90	94	28	30	6	22.8	11.73	1.2
KASGH0200452	1	-DIN6	45	25	36	90	94	28	30	8	28.3	11.73	1.2
KASGH0200453	1	-DIN6	45	35	48	90	94	28	30	10	38.3	11.73	1.2
KASGH0200454	1	-DIN6	45	45	58	90	94	28	30	14	48.8	11.73	1.2
KASGH0200501	1	-DIN6	50	20	30	100	104	28	30	6	22.8	11.96	1.5
KASGH0200502	1	-DIN6	50	25	36	100	104	28	30	8	28.3	11.96	1.5
KASGH0200503	1	-DIN6	50	35	48	100	104	28	30	10	38.3	11.96	1.5
KASGH0200504	1	-DIN6	50	45	58	100	104	28	30	14	48.8	11.96	1.5
KASGH0200505	2	-DIN6	50	45	68	100	104	28	65	14	48.8	11.96	3.3
KASGH0200561	1	-DIN6	56	25	36	112	116	28	30	8	28.3	12.17	1.9
KASGH0200562	1	-DIN6	56	35	48	112	116	28	30	10	38.3	12.17	1.9



### KASGH-DIN6

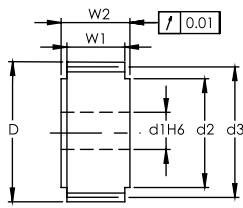


Fig. 1

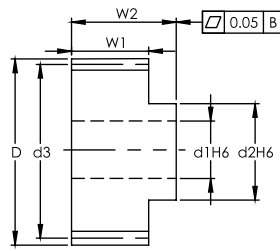
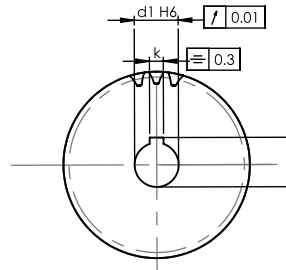


Fig. 2



Dimension: mm

- NOTE:  
 1) ALL THE SURFACES IN ALL THE VIEWS ARE TRUE.  
 2) ALL THE SURFACES HAVE R<sub>a</sub> 0.8 SURFACE FINISH.  
 3) ALL THE SURFACES ARE GROUND.

Straight

DIN

#### Series KASGH-DIN6 Straight Teeth Ground Pinions Quality Grade DIN 6

Material SCM415/SCM440  
 Hardness: HRC 50~55°  
 Teeth Ground after Hardening

Code	Fig.	DIN	No. of Teeth	d1	d2	d3	D	W1	W2	k	h	F <sub>ta</sub> kN	KG
<b>Module 3</b>													
KASGH0300181	1	-DIN6	18	25	36	54	60	28	30	8	28.3	6.79	0.4
KASGH0300201	1	-DIN6	20	25	36	60	66	28	30	8	28.3	7.55	0.5
KASGH0300202	1	-DIN6	20	30	45	60	66	28	30	8	33.3	7.55	0.5
KASGH0300203	1	-DIN6	20	35	48	60	66	28	30	10	38.3	7.55	0.5
KASGH0300221	2	-DIN6	22	22	36	66	72	28	56	6	24.8	8.30	1.1
KASGH0300222	1	-DIN6	22	25	36	66	72	28	30	8	28.3	8.30	0.6
KASGH0300223	2	-DIN6	22	25	44	66	72	28	60	8	28.3	8.30	1.2
KASGH0300224	1	-DIN6	22	30	45	66	72	28	30	8	33.3	8.30	0.6
KASGH0300225	2	-DIN6	22	32	55	66	72	28	65	10	35.3	8.30	1.2
KASGH0300226	2	-DIN6	22	30	50	66	72	28	60	8	33.3	8.30	1.2
KASGH0300227	1	-DIN6	22	35	48	66	72	28	30	10	38.3	8.30	0.6
KASGH0300228	2	-DIN6	22	35	55	66	72	28	65	10	38.3	8.30	1.2
KASGH0300229	2	-DIN6	22	40	62	66	72	28	65	12	43.3	8.30	1.2
KASGH0300251	1	-DIN6	25	25	36	75	81	28	30	8	28.3	10.74	0.7
KASGH0300252	1	-DIN6	25	30	45	75	81	28	30	8	33.3	10.74	0.7
KASGH0300253	2	-DIN6	25	32	55	75	81	28	65	10	35.3	10.74	1.6
KASGH0300254	1	-DIN6	25	35	48	75	81	28	30	10	38.3	10.74	0.7
KASGH0300255	2	-DIN6	25	40	62	75	81	28	65	12	43.3	10.74	1.6
KASGH0300256	1	-DIN6	25	45	58	75	81	28	30	14	48.8	10.74	0.7
KASGH0300281	2	-DIN6	28	22	36	84	90	28	56	6	24.8	12.02	1.7
KASGH0300282	1	-DIN6	28	25	36	84	90	28	30	8	28.3	12.02	0.9
KASGH0300283	2	-DIN6	28	25	44	84	90	28	60	8	28.3	12.02	1.8
KASGH0300284	1	-DIN6	28	30	45	84	90	28	30	8	33.3	12.02	0.9
KASGH0300285	2	-DIN6	28	30	50	84	90	28	60	8	33.3	12.02	1.8
KASGH0300286	2	-DIN6	28	32	55	84	90	28	65	10	35.3	12.02	1.9
KASGH0300287	1	-DIN6	28	35	48	84	90	28	30	10	38.3	12.02	0.9
KASGH0300288	2	-DIN6	28	35	55	84	90	28	65	10	38.3	12.02	1.9
KASGH0300289	2	-DIN6	28	40	62	84	90	28	65	12	43.3	12.02	1.9
KASGH03002810	1	-DIN6	28	45	58	84	90	28	30	14	48.8	12.02	0.9
KASGH03002811	2	-DIN6	28	45	68	84	90	28	65	14	48.8	12.02	1.9
KASGH0300321	1	-DIN6	32	25	36	96	102	28	30	8	28.3	13.74	1.2
KASGH0300322	1	-DIN6	32	30	45	96	102	28	30	8	33.3	13.74	1.2
KASGH0300323	2	-DIN6	32	32	55	96	102	28	65	10	35.3	13.74	2.5
KASGH0300324	1	-DIN6	32	35	48	96	102	28	30	10	38.3	13.74	1.2
KASGH0300325	2	-DIN6	32	40	62	96	102	28	65	12	43.3	13.74	2.5
KASGH0300326	1	-DIN6	32	45	58	96	102	28	30	14	48.8	13.74	1.2
KASGH0300327	1	-DIN6	32	60	80	96	102	28	30	18	64.4	13.74	1.2
KASGH0300361	1	-DIN6	36	25	36	108	114	28	30	8	28.3	15.46	1.4
KASGH0300362	1	-DIN6	36	35	48	108	114	28	30	10	38.3	15.46	1.4
KASGH0300363	1	-DIN6	36	45	58	108	114	28	30	14	48.8	15.46	1.4
KASGH0300364	2	-DIN6	36	45	68	108	114	28	65	14	48.8	15.46	1.3
KASGH0300365	1	-DIN6	36	60	80	108	114	28	30	18	64.4	15.46	1.4
KASGH0300401	1	-DIN6	40	25	36	120	126	28	30	8	28.3	17.18	1.8



### KASGH-DIN6

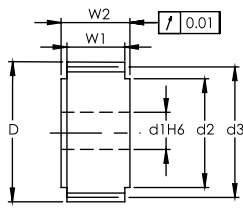


Fig. 1

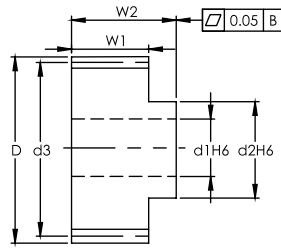
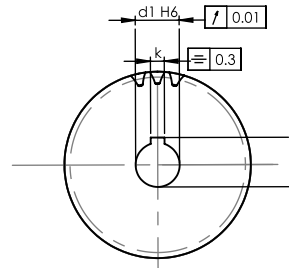


Fig. 2



Dimension: mm

- NOTE:  
 1) ALL THE SURFACES IN ALL THE VIEWS ARE TRUE.  
 2) ALL THE SURFACES HAVE R<sub>a</sub> 0.8 SURFACE FINISH.  
 3) ALL THE SURFACES ARE GROUND.

Series KASGH-DIN6 Straight Teeth Ground Pinions  
 Quality Grade DIN 6

Material SCM415/SCM440  
 Hardness: HRC 50~55°  
 Teeth Ground after Hardening

Straight  
DIN

Code	Fig.	DIN	No. of Teeth	d1	d2	d3	D	W1	W2	k	h	F <sub>ta</sub> kN	KG
<b>Module 3</b>													
KASGH0300402	1	-DIN6	40	35	48	120	126	28	30	10	38.3	17.18	1.8
KASGH0300403	1	-DIN6	40	45	58	120	126	28	30	14	48.8	17.18	1.8
KASGH0300404	1	-DIN6	40	60	80	120	126	28	30	18	64.4	17.18	1.8
KASGH0300451	1	-DIN6	45	25	36	135	141	28	30	8	28.3	17.60	2.2
KASGH0300452	1	-DIN6	45	35	48	135	141	28	30	10	38.3	17.60	2.2
KASGH0300453	1	-DIN6	45	45	58	135	141	28	30	14	48.8	17.60	2.2
KASGH0300454	1	-DIN6	45	60	80	135	141	28	30	18	64.4	17.60	2.2
KASGH0300501	1	-DIN6	50	35	48	150	156	28	30	10	38.3	17.94	2.7
KASGH0300502	1	-DIN6	50	45	58	150	156	28	30	14	48.8	17.94	2.7
KASGH0300561	1	-DIN6	56	45	58	168	174	28	30	14	48.8	18.25	3.4
KASGH0300631	1	-DIN6	63	45	58	189	195	28	30	14	48.8	18.57	4.2
KASGH0300632	1	-DIN6	63	60	80	189	195	28	30	18	64.4	18.57	4.2



KASGH-DIN6

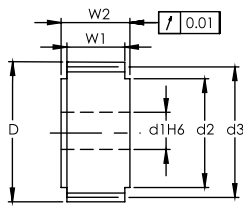


Fig. 1

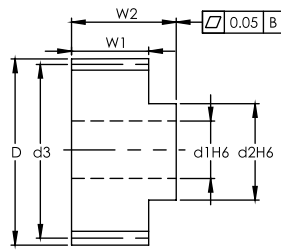
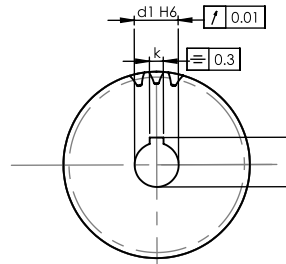


Fig. 2



Dimension: mm

NOTE:  
 1) ALL THE SURFACES IN ALL THE VIEWS ARE TRUE.  
 2) ALL THE SURFACES HAVE R<sub>a</sub> 0.8 SURFACE FINISH.  
 3) ALL THE SURFACES ARE GROUND.

Straight

DIN

Series KASGH-DIN6 Straight Teeth Ground Pinions  
 Quality Grade DIN 6

Material SCM415/SCM440  
 Hardness: HRC 50~55°  
 Teeth Ground after Hardening

Code	Fig.	DIN	No. of Teeth	d1	d2	d3	D	W1	W2	k	h	F <sub>ta</sub> kN	KG
<b>Module 4</b>													
KASGH0400181	1	-DIN6	18	32	55	72	80	40	75	10	35.3	12.93	1.2
KASGH0400201	2	-DIN6	20	32	55	80	88	40	75	10	35.3	14.37	1.8
KASGH0400202	1	-DIN6	20	35	52	80	88	40	50	10	38.3	14.37	1.2
KASGH0400203	2	-DIN6	20	35	55	80	88	40	75	10	38.3	14.37	1.8
KASGH0400204	1	-DIN6	20	45	65	80	88	40	50	14	48.8	14.37	1.2
KASGH0400205	2	-DIN6	20	40	62	80	88	40	75	12	43.3	14.37	1.8
KASGH0400221	1	-DIN6	22	35	52	88	96	40	50	10	38.3	15.81	1.4
KASGH0400222	1	-DIN6	22	45	65	88	96	40	50	14	48.8	15.81	1.4
KASGH0400223	2	-DIN6	22	45	68	88	96	40	75	14	48.8	15.81	2.1
KASGH0400251	2	-DIN6	25	32	55	100	108	40	75	10	35.3	20.45	2.7
KASGH0400252	1	-DIN6	25	35	52	100	108	40	50	10	38.3	20.45	1.8
KASGH0400253	2	-DIN6	25	35	55	100	108	40	75	10	38.3	20.45	2.7
KASGH0400254	2	-DIN6	25	40	62	100	108	40	75	12	43.3	20.45	2.7
KASGH0400255	1	-DIN6	25	45	65	100	108	40	50	14	48.8	20.45	1.8
KASGH0400256	2	-DIN6	25	55	80	100	108	40	80	16	59.3	20.45	2.9
KASGH0400281	1	-DIN6	28	35	52	112	120	40	50	10	38.3	22.90	2.2
KASGH0400282	1	-DIN6	28	45	65	112	120	40	50	14	48.8	22.90	2.2
KASGH0400283	2	-DIN6	28	45	68	112	120	40	75	14	48.8	22.90	3.3
KASGH0400321	1	-DIN6	32	35	52	128	136	40	50	10	38.3	26.18	2.9
KASGH0400322	1	-DIN6	32	45	65	128	136	40	50	14	48.8	26.18	2.9
KASGH0400323	2	-DIN6	32	55	80	128	136	40	80	16	59.3	26.18	4.6
KASGH0400324	2	-DIN6	32	75	110	128	136	40	100	20	79.9	26.18	5.7
KASGH0400401	1	-DIN6	40	45	65	160	168	40	50	14	48.8	32.72	4.4
KASGH0400402	1	-DIN6	40	60	80	160	168	40	50	18	64.4	32.72	4.4
KASGH0400403	2	-DIN6	40	75	110	160	168	40	100	20	79.9	32.72	8.7
<b>Module 5</b>													
KASGH0500211	2	-DIN6	21	45	68	105	115	50	85	14	48.8	23.59	3.5
KASGH0500212	2	-DIN6	21	55	80	105	115	50	90	16	59.3	23.59	3.7
KASGH0500251	2	-DIN6	25	45	68	125	135	50	85	14	48.8	31.95	4.8
KASGH0500252	2	-DIN6	25	55	80	125	135	50	90	16	59.3	31.95	5.1
KASGH0500253	2	-DIN6	25	75	110	125	135	50	110	20	79.9	31.95	6.2
<b>Module 6</b>													
KASGH0600211	2	-DIN6	21	55	80	126	138	60	100	16	59.3	33.97	5.9
KASGH0600212	2	-DIN6	21	75	110	126	138	60	120	20	79.9	33.97	7.0
KASGH0600251	2	-DIN6	25	55	80	150	162	60	100	16	59.3	46.01	8.1
KASGH0600252	2	-DIN6	25	75	110	150	162	60	120	20	79.9	46.01	9.7
<b>Module 8</b>													
KASGH0800201	2	-DIN6	20	75	110	160	176	80	140	20	79.9	57.51	13.4
KASGH0800202	2	-DIN6	20	85	125	160	176	80	145	22	90.4	57.51	13.8