



KCSM-DIN8

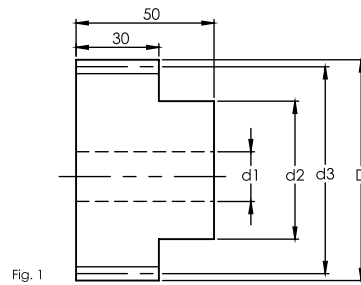


Fig. 1

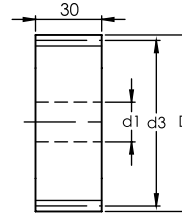


Fig. 2

Dimension: mm

NOTE:
1) ALL THE SURFACES HAVE Ra1.6 SURFACE FINISH.

Series KCSM-DIN8 Straight Soft Pinions
Quality Grade DIN 8

Material S45C / S50C

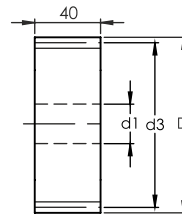
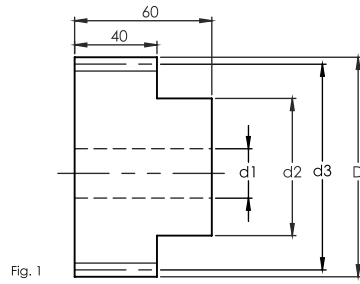
Straight

DIN

| Code | Fig. | DIN | No. of Teeth | d1 | d2 | d3 | D | W1 | W2 | k | h | F _{ta} kN | KG |
|-----------------|------|-------|--------------|----|----|-----|-----|----|----|---|---|-----------------------|------|
| Module 3 | | | | | | | | | | | | | |
| KCSM0300121 | 1 | -DIN8 | 12 | 14 | 25 | 36 | 42 | * | * | * | * | * | 0.3 |
| KCSM0300131 | 1 | -DIN8 | 13 | 14 | 25 | 39 | 45 | * | * | * | * | * | 0.4 |
| KCSM0300141 | 1 | -DIN8 | 14 | 14 | 25 | 42 | 48 | * | * | * | * | * | 0.4 |
| KCSM0300151 | 1 | -DIN8 | 15 | 14 | 35 | 45 | 51 | * | * | * | * | * | 0.5 |
| KCSM0300161 | 1 | -DIN8 | 16 | 14 | 35 | 48 | 54 | * | * | * | * | 0.66 | 0.5 |
| KCSM0300171 | 1 | -DIN8 | 17 | 14 | 42 | 51 | 57 | * | * | * | * | 0.79 | 0.6 |
| KCSM0300181 | 1 | -DIN8 | 18 | 14 | 45 | 54 | 60 | * | * | * | * | 0.84 | 0.7 |
| KCSM0300191 | 1 | -DIN8 | 19 | 14 | 45 | 57 | 63 | * | * | * | * | 0.88 | 0.7 |
| KCSM0300201 | 1 | -DIN8 | 20 | 14 | 45 | 60 | 66 | * | * | * | * | 0.93 | 0.8 |
| KCSM0300211 | 1 | -DIN8 | 21 | 14 | 45 | 63 | 69 | * | * | * | * | 0.97 | 0.9 |
| KCSM0300221 | 1 | -DIN8 | 22 | 14 | 50 | 66 | 72 | * | * | * | * | 1.02 | 1.0 |
| KCSM0300231 | 1 | -DIN8 | 23 | 14 | 50 | 69 | 75 | * | * | * | * | 1.07 | 1.0 |
| KCSM0300241 | 1 | -DIN8 | 24 | 14 | 50 | 72 | 78 | * | * | * | * | 1.11 | 1.1 |
| KCSM0300251 | 1 | -DIN8 | 25 | 14 | 60 | 75 | 81 | * | * | * | * | 1.32 | 1.2 |
| KCSM0300271 | 1 | -DIN8 | 27 | 14 | 60 | 81 | 87 | * | * | * | * | 1.43 | 1.4 |
| KCSM0300281 | 1 | -DIN8 | 28 | 14 | 60 | 84 | 90 | * | * | * | * | 1.48 | 1.5 |
| KCSM0300282 | 1 | -DIN8 | 28 | 15 | 60 | 84 | 90 | * | * | * | * | 1.48 | 1.5 |
| KCSM0300301 | 1 | -DIN8 | 30 | 14 | 60 | 90 | 96 | * | * | * | * | 1.58 | 1.7 |
| KCSM0300321 | 1 | -DIN8 | 32 | 14 | 60 | 96 | 102 | * | * | * | * | 1.69 | 1.9 |
| KCSM0300351 | 1 | -DIN8 | 35 | 14 | 80 | 105 | 111 | * | * | * | * | 1.85 | 2.3 |
| KCSM0300361 | 1 | -DIN8 | 36 | 14 | 80 | 108 | 114 | * | * | * | * | 1.90 | 2.4 |
| KCSM0300381 | 1 | -DIN8 | 38 | 14 | 80 | 114 | 120 | * | * | * | * | 2.01 | 2.7 |
| KCSM0300401 | 1 | -DIN8 | 40 | 14 | 80 | 120 | 126 | * | * | * | * | 2.11 | 2.9 |
| KCSM0300451 | 2 | -DIN8 | 45 | 20 | * | 135 | 141 | * | * | * | * | 2.38 | 3.7 |
| KCSM0300481 | 2 | -DIN8 | 48 | 20 | * | 144 | 150 | * | * | * | * | 2.53 | 4.2 |
| KCSM0300501 | 2 | -DIN8 | 50 | 25 | * | 150 | 156 | * | * | * | * | 3.19 | 4.5 |
| KCSM0300521 | 2 | -DIN8 | 52 | 25 | * | 156 | 162 | * | * | * | * | 3.32 | 5.0 |
| KCSM0300561 | 2 | -DIN8 | 56 | 25 | * | 168 | 174 | * | * | * | * | 3.57 | 5.6 |
| KCSM0300601 | 2 | -DIN8 | 60 | 25 | * | 180 | 186 | * | * | * | * | 3.83 | 6.4 |
| KCSM0300761 | 2 | -DIN8 | 76 | 25 | * | 228 | 234 | * | * | * | * | 4.85 | 10.1 |
| KCSM0300801 | 2 | -DIN8 | 80 | 25 | * | 240 | 246 | * | * | * | * | 5.10 | 11.2 |
| KCSM0300951 | 2 | -DIN8 | 95 | 25 | * | 285 | 291 | * | * | * | * | 6.06 | 15.7 |



KCSM-DIN8



Dimension: mm

NOTE:
1) ALL THE SURFACES HAVE Ra1.6 SURFACE FINISH.

Series KCSM-DIN8 Straight Soft Pinions
Quality Grade DIN 8

Material S45C / S50C

Straight
DIN

| Code | Fig. | DIN | No. of Teeth | d1 | d2 | d3 | D | W1 | W2 | k | h | F _{ta} kN | KG |
|-----------------|------|-------|--------------|----|----|-----|-----|----|----|---|---|-----------------------|------|
| Module 4 | | | | | | | | | | | | | |
| KCSM0400121 | 1 | -DIN8 | 12 | 16 | 35 | 48 | 56 | * | * | * | * | * | 0.6 |
| KCSM0400131 | 1 | -DIN8 | 13 | 16 | 35 | 52 | 60 | * | * | * | * | * | 0.7 |
| KCSM0400141 | 1 | -DIN8 | 14 | 16 | 45 | 56 | 64 | * | * | * | * | * | 0.8 |
| KCSM0400151 | 1 | -DIN8 | 15 | 16 | 45 | 60 | 68 | * | * | * | * | * | 0.9 |
| KCSM0400161 | 1 | -DIN8 | 16 | 16 | 45 | 64 | 72 | * | * | * | * | 1.18 | 1.0 |
| KCSM0400171 | 1 | -DIN8 | 17 | 16 | 50 | 68 | 76 | * | * | * | * | 1.40 | 1.1 |
| KCSM0400181 | 1 | -DIN8 | 18 | 16 | 50 | 72 | 80 | * | * | * | * | 1.49 | 1.2 |
| KCSM0400191 | 1 | -DIN8 | 19 | 16 | 60 | 76 | 84 | * | * | * | * | 1.57 | 1.3 |
| KCSM0400201 | 1 | -DIN8 | 20 | 16 | 60 | 80 | 88 | * | * | * | * | 1.65 | 1.4 |
| KCSM0400211 | 1 | -DIN8 | 21 | 16 | 70 | 84 | 92 | * | * | * | * | 1.73 | 1.6 |
| KCSM0400221 | 1 | -DIN8 | 22 | 16 | 70 | 88 | 96 | * | * | * | * | 1.81 | 1.7 |
| KCSM0400231 | 1 | -DIN8 | 23 | 16 | 75 | 92 | 100 | * | * | * | * | 1.90 | 1.8 |
| KCSM0400241 | 1 | -DIN8 | 24 | 16 | 75 | 96 | 104 | * | * | * | * | 1.98 | 2.0 |
| KCSM0400251 | 1 | -DIN8 | 25 | 16 | 75 | 100 | 108 | * | * | * | * | 2.35 | 2.2 |
| KCSM0400301 | 1 | -DIN8 | 30 | 16 | 75 | 120 | 128 | * | * | * | * | 2.82 | 3.0 |
| KCSM0400381 | 2 | -DIN8 | 38 | 25 | * | 152 | 160 | * | * | * | * | 3.57 | 4.7 |
| KCSM0400401 | 2 | -DIN8 | 40 | 25 | * | 160 | 168 | * | * | * | * | 3.75 | 5.2 |
| KCSM0400451 | 2 | -DIN8 | 45 | 25 | * | 180 | 188 | * | * | * | * | 4.22 | 6.5 |
| KCSM0400481 | 2 | -DIN8 | 48 | 25 | * | 192 | 200 | * | * | * | * | 4.51 | 7.4 |
| KCSM0400501 | 2 | -DIN8 | 50 | 25 | * | 200 | 208 | * | * | * | * | 5.67 | 8.0 |
| KCSM0400521 | 2 | -DIN8 | 52 | 25 | * | 208 | 216 | * | * | * | * | 5.90 | 8.6 |
| KCSM0400561 | 2 | -DIN8 | 56 | 25 | * | 224 | 232 | * | * | * | * | 6.35 | 10.0 |
| KCSM0400601 | 2 | -DIN8 | 60 | 25 | * | 240 | 248 | * | * | * | * | 6.80 | 11.4 |
| KCSM0400761 | 2 | -DIN8 | 76 | 25 | * | 304 | 312 | * | * | * | * | 8.62 | 18.0 |
| KCSM0400801 | 2 | -DIN8 | 80 | 25 | * | 320 | 328 | * | * | * | * | 9.07 | 19.9 |
| KCSM0400951 | 2 | -DIN8 | 95 | 25 | * | 380 | 388 | * | * | * | * | 10.77 | 27.8 |



KCSM-DIN8

Straight
DIN

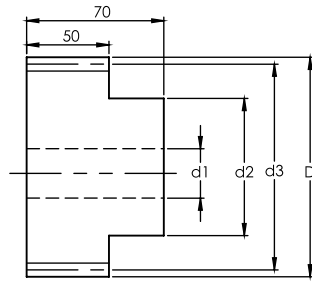


Fig. 1

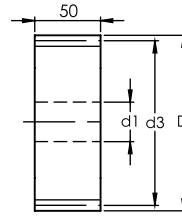


Fig. 2

Dimension: mm

NOTE:
1) ALL THE SURFACES HAVE Ra1.6 SURFACE FINISH.

Series KCSM-DIN8 Straight Soft Pinions
Quality Grade DIN 8

Material S45C / S50C

| Code | Fig. | DIN | No. of Teeth | d1 | d2 | d3 | D | W1 | W2 | k | F _{ta} kN | KG |
|-----------------|------|-------|--------------|----|----|-----|-----|----|----|---|-----------------------|------|
| Module 5 | | | | | | | | | | | | |
| KCSM0500121 | 1 | -DIN8 | 12 | 20 | 45 | 60 | 70 | * | * | * | * | 1.1 |
| KCSM0500131 | 1 | -DIN8 | 13 | 20 | 45 | 65 | 75 | * | * | * | * | 1.2 |
| KCSM0500141 | 1 | -DIN8 | 14 | 20 | 55 | 70 | 80 | * | * | * | * | 1.4 |
| KCSM0500151 | 1 | -DIN8 | 15 | 20 | 60 | 75 | 85 | * | * | * | * | 1.6 |
| KCSM0500161 | 1 | -DIN8 | 16 | 20 | 60 | 80 | 90 | * | * | * | 1.84 | 1.7 |
| KCSM0500171 | 1 | -DIN8 | 17 | 20 | 70 | 85 | 95 | * | * | * | 2.19 | 1.9 |
| KCSM0500181 | 1 | -DIN8 | 18 | 20 | 70 | 90 | 100 | * | * | * | 2.32 | 2.2 |
| KCSM0500191 | 1 | -DIN8 | 19 | 20 | 70 | 95 | 105 | * | * | * | 2.45 | 2.4 |
| KCSM0500201 | 1 | -DIN8 | 20 | 20 | 70 | 100 | 110 | * | * | * | 2.58 | 2.6 |
| KCSM0500211 | 1 | -DIN8 | 21 | 20 | 70 | 105 | 115 | * | * | * | 2.71 | 2.9 |
| KCSM0500221 | 1 | -DIN8 | 22 | 20 | 80 | 110 | 120 | * | * | * | 2.84 | 3.1 |
| KCSM0500231 | 1 | -DIN8 | 23 | 20 | 80 | 115 | 125 | * | * | * | 2.96 | 3.4 |
| KCSM0500241 | 1 | -DIN8 | 24 | 20 | 80 | 120 | 130 | * | * | * | 3.09 | 3.6 |
| KCSM0500251 | 1 | -DIN8 | 25 | 20 | 80 | 125 | 135 | * | * | * | 3.67 | 3.9 |
| KCSM0500301 | 1 | -DIN8 | 30 | 20 | 90 | 150 | 160 | * | * | * | 4.40 | 5.5 |
| KCSM0500361 | 2 | -DIN8 | 36 | 30 | * | 180 | 190 | * | * | * | 5.28 | 7.8 |
| KCSM0500381 | 2 | -DIN8 | 38 | 30 | * | 190 | 200 | * | * | * | 5.57 | 8.6 |
| KCSM0500401 | 2 | -DIN8 | 40 | 30 | * | 200 | 210 | * | * | * | 5.87 | 9.5 |
| KCSM0500451 | 2 | -DIN8 | 45 | 30 | * | 225 | 235 | * | * | * | 6.60 | 11.9 |
| KCSM0500481 | 2 | -DIN8 | 48 | 30 | * | 240 | 250 | * | * | * | 7.04 | 13.5 |
| KCSM0500501 | 2 | -DIN8 | 50 | 30 | * | 250 | 260 | * | * | * | 8.86 | 14.6 |
| KCSM0500521 | 2 | -DIN8 | 52 | 30 | * | 260 | 270 | * | * | * | 9.21 | 15.7 |
| KCSM0500561 | 2 | -DIN8 | 56 | 30 | * | 280 | 290 | * | * | * | 9.92 | 18.1 |
| KCSM0500601 | 2 | -DIN8 | 60 | 30 | * | 300 | 310 | * | * | * | 10.63 | 20.7 |
| KCSM0500761 | 2 | -DIN8 | 76 | 30 | * | 380 | 390 | * | * | * | 13.47 | 32.8 |
| KCSM0500801 | 2 | -DIN8 | 80 | 30 | * | 400 | 410 | * | * | * | 14.18 | 36.3 |
| KCSM0500951 | 2 | -DIN8 | 95 | 30 | * | 475 | 485 | * | * | * | 16.83 | 50.8 |



KCSM-DIN8

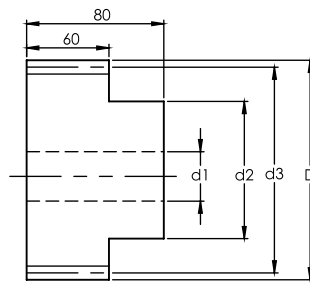


Fig. 1

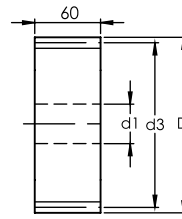


Fig. 2

Dimension: mm

NOTE:

1) ALL THE SURFACES HAVE Ra1.6 SURFACE FINISH.

Series KCSM-DIN8 Straight Soft Pinions

Quality Grade DIN 8

Material S45C / S50C

Straight

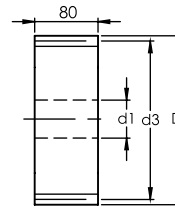
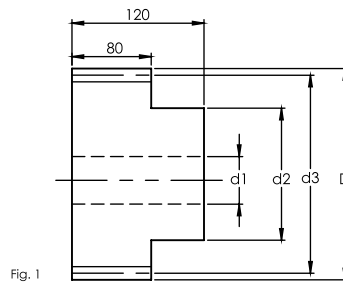
DIN

| Code | Fig. | DIN | No. of Teeth | d1 | d2 | d3 | D | W1 | W2 | k | h | F _{ta} kN | KG |
|-----------------|------|-------|--------------|----|-----|-----|-----|----|----|---|---|-----------------------|------|
| Module 6 | | | | | | | | | | | | | |
| KCSM0600151 | 1 | -DIN8 | 15 | 20 | 60 | 90 | 102 | * | * | * | * | * | 2.6 |
| KCSM0600191 | 1 | -DIN8 | 19 | 20 | 80 | 114 | 126 | * | * | * | * | 3.53 | 3.9 |
| KCSM0600201 | 1 | -DIN8 | 20 | 20 | 90 | 120 | 132 | * | * | * | * | 3.71 | 4.3 |
| KCSM0600211 | 1 | -DIN8 | 21 | 20 | 90 | 126 | 138 | * | * | * | * | 3.90 | 4.7 |
| KCSM0600221 | 1 | -DIN8 | 22 | 20 | 100 | 132 | 144 | * | * | * | * | 4.08 | 5.1 |
| KCSM0600251 | 1 | -DIN8 | 25 | 20 | 110 | 150 | 162 | * | * | * | * | 5.28 | 6.5 |
| KCSM0600301 | 2 | -DIN8 | 30 | 30 | * | 180 | 192 | * | * | * | * | 6.34 | 9.1 |
| KCSM0600361 | 2 | -DIN8 | 36 | 30 | * | 216 | 228 | * | * | * | * | 7.60 | 12.8 |



KCSM-DIN8

Straight
DIN



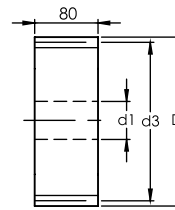
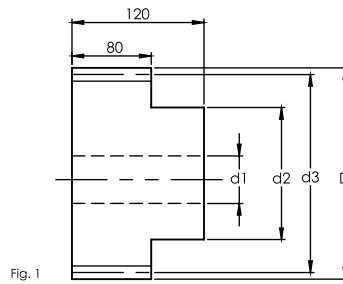
Dimension: mm

NOTE:
1) ALL THE SURFACES HAVE Ra1.6 SURFACE FINISH.

Series KCSM-DIN8 Straight Soft Pinions
Quality Grade DIN 8

Material S45C / S50C

| Code | Fig. | DIN | No. of Teeth | d1 | d2 | d3 | D | W1 | W2 | k | h | F _{ta} kN | KG |
|-----------------|------|-------|--------------|----|-----|-----|-----|----|----|---|---|-----------------------|------|
| Module 8 | | | | | | | | | | | | | |
| KCSM0800151 | 1 | -DIN8 | 15 | 40 | 90 | 120 | 136 | * | * | * | * | * | 6.8 |
| KCSM0800181 | 1 | -DIN8 | 18 | 40 | 100 | 144 | 160 | * | * | * | * | 5.94 | 9.5 |
| KCSM0800201 | 1 | -DIN8 | 20 | 40 | 120 | 160 | 176 | * | * | * | * | 6.60 | 11.5 |
| KCSM0800241 | 1 | -DIN8 | 24 | 40 | 150 | 192 | 208 | * | * | * | * | 7.92 | 16.0 |
| KCSM0800251 | 1 | -DIN8 | 25 | 40 | 150 | 200 | 216 | * | * | * | * | 9.39 | 17.3 |
| KCSM0800301 | 1 | -DIN8 | 30 | 40 | 190 | 240 | 256 | * | * | * | * | 11.26 | 24.2 |



Dimension: mm

| Code | Fig. | DIN | | d1 | d2 | d3 | D | W1 | W2 | k | h | KG |
|------------------|------|-------|--|----|-----|-----|-----|----|----|---|---|------|
| Module 10 | | | | | | | | | | | | |
| KCSM1000201 | 2 | -DIN8 | | 40 | 150 | 200 | 220 | * | * | * | * | 22.4 |