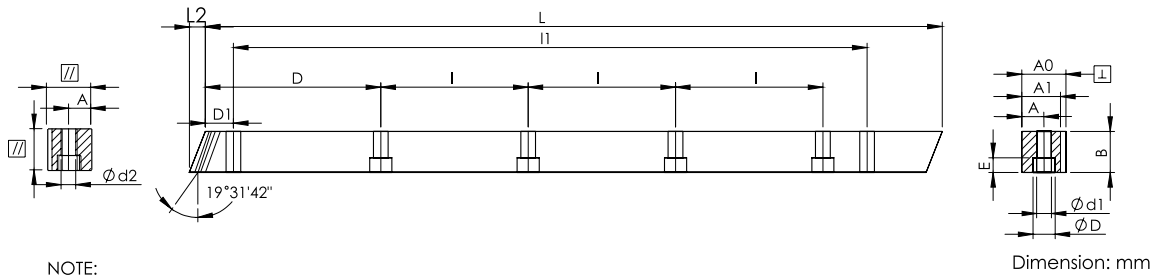




KCHRGH-DIN5



- NOTE:
 1) ALL THE SURFACES IN THE LEFT AND RIGHT VIEW ARE TRUE.
 2) ALL SURFACES HAVE Ra 0.8 SURFACE FINISH.
 3) ALL THE SURFACES ARE GROUND.

Series KCHRGH- DIN5 Helical Teeth Ground Racks
 Quality Grade DIN 5

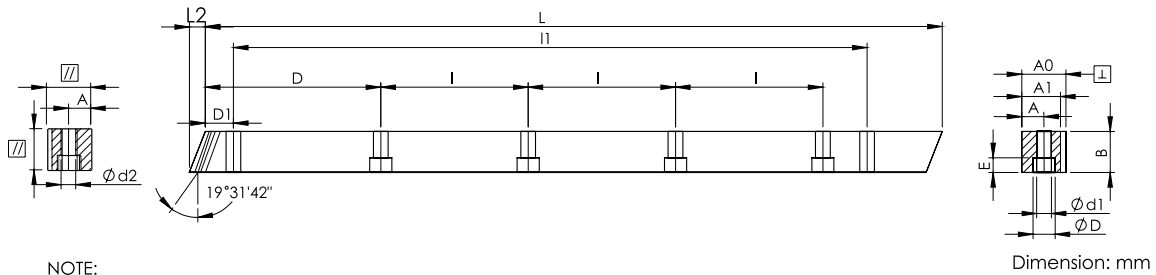
Material S50C
 Right Hand Angle 19°31'42"
 Hardness: HRC 50~55°
 Ground on all sides after hardening.
 Total Pitch Error: $F_p / 1000 \leq 0.026$ mm
 Room Temperature is 25°C



Code	Module	L	L2	No. of Teeth	B	A0	A1	D	I	No. of Holes	A	ød1	øD	E	D1	I1	ød2	f	F _{ta} kN	KG
KCHRGH01505-DIN5	1.5	500.00	6.70	100	19	19	17.5	62.5	125	4	8	7	11	7	31.7	436.60	5.7	1.5	4.84	1.3
KCHRGH01510-DIN5	1.5	1000.00	6.70	200	19	19	17.5	62.5	125	8	8	7	11	7	31.7	936.60	5.7	1.5	4.84	2.6
KCHRGH02005-DIN5	2	500.00	8.50	75	24	24	22.0	62.5	125	4	8	7	11	7	31.7	436.60	5.7	2	8.15	2.1
KCHRGH02010-DIN5	2	1000.00	8.50	150	24	24	22.0	62.5	125	8	8	7	11	7	31.7	936.60	5.7	2	8.15	4.1
KCHRGH02505-DIN5	2.5	500.00	8.50	60	24	24	21.5	62.5	125	4	9	7	11	7	31.7	436.60	5.7	2	10.19	2.1
KCHRGH02510-DIN5	2.5	1000.00	8.50	120	24	24	21.5	62.5	125	8	9	7	11	7	31.7	936.60	5.7	2	10.19	4.1
KCHRGH03005-DIN5	3	500.00	10.30	50	29	29	26.0	62.5	125	4	9	10	15	9	35	430.00	7.7	2	14.77	3.0
KCHRGH03010-DIN5	3	1000.00	10.30	100	29	29	26.0	62.5	125	8	9	10	15	9	35	930.00	7.7	2	14.77	6.0
KCHRGH04005-DIN5	4	506.67	13.80	38	39	39	35.0	62.5	125	4	12	10	15	9	33.3	433.00	7.7	2	26.49	5.5
KCHRGH04010-DIN5	4	1000.00	13.80	75	39	39	35.0	62.5	125	8	12	10	15	9	33.3	933.40	7.7	2	26.49	10.8
KCHRGH05005-DIN5	5	500.00	17.40	30	49	49	34.0	62.5	125	4	12	14	20	13	37.5	425.00	11.7	3	41.60	6.8
KCHRGH05010-DIN5	5	1000.00	17.40	60	49	49	34.0	62.5	125	8	12	14	20	13	37.5	925.00	11.7	3	41.60	13.6
KCHRGH06005-DIN5	6	500.00	20.90	25	59	59	43.0	62.5	125	4	16	18	26	17	37.5	425.00	15.7	3	60.11	10.3
KCHRGH06010-DIN5	6	1000.00	20.90	50	59	59	43.0	62.5	125	8	16	18	26	17	37.5	925.00	15.7	3	60.11	20.5
KCHRGH08005-DIN5	8	480.00	28.00	18	79	79	71.0	60.0	120	4	25	22	33	21	120	240.00	19.7	4	107.31	21.3
KCHRGH08010-DIN5	8	960.00	28.00	36	79	79	71.0	60.0	120	8	25	22	33	21	120	720.00	19.7	4	107.31	42.6



KCHRGH-DIN6



NOTE:
 1) ALL THE SURFACES IN THE LEFT AND RIGHT VIEW ARE TRUE.
 2) ALL SURFACES HAVE Ra 0.8 SURFACE FINISH.
 3) ALL THE SURFACES ARE GROUND.

Dimension: mm

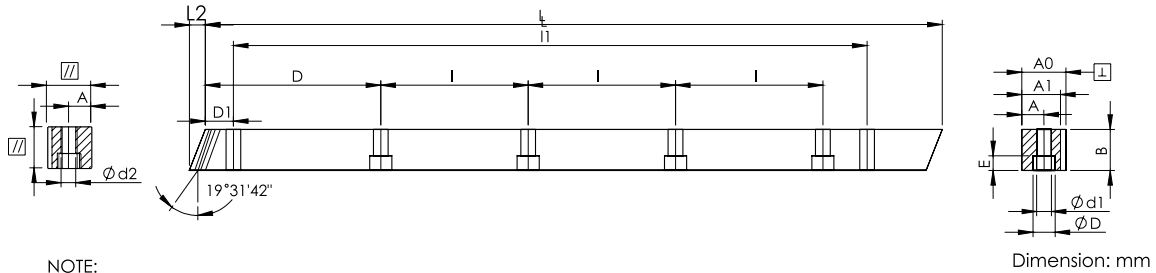
Series KCHRGH-DIN6 Helical Teeth Ground Racks
 Quality Grade DIN 6

Material S50C
 Right Hand Angle 19°31'42"
 Hardness: HRC 50~55°
 Ground on all sides after hardening.
 Total Pitch Error: $F_p / 1000 \leq 0.036 \text{ mm}$
 $F_p / 2000 \leq 0.047 \text{ mm} (\leq 0.024 / 1000 \text{ mm})$

Code	Module	L	L2	No. of Teeth	B	A0	A1	D	I	No. of Holes	A	ød1	øD	E	D1	I1	ød2	f	F _{ta} kN	KG
KCHRGH01505-DIN6	1.5	500.00	6.70	100	19	19	17.5	62.5	125	4	8	7	11	7	31.7	436.60	5.7	1.5	4.84	1.3
KCHRGH01510-DIN6	1.5	1000.00	6.70	200	19	19	17.5	62.5	125	8	8	7	11	7	31.7	936.60	5.7	1.5	4.84	2.6
KCHRGH02005-DIN6	2	500.00	8.50	75	24	24	22.0	62.5	125	4	8	7	11	7	31.7	436.60	5.7	2	8.15	2.1
KCHRGH02010-DIN6	2	1000.00	8.50	150	24	24	22.0	62.5	125	8	8	7	11	7	31.7	936.60	5.7	2	8.15	4.1
KCHRGH02020-DIN6	2	2000.00	8.50	300	24	24	22.0	62.5	125	16	8	7	11	7	31.7	1936.60	5.7	2	8.15	8.2
KCHRGH02505-DIN6	2.5	500.00	8.50	60	24	24	21.5	62.5	125	4	9	7	11	7	31.7	436.60	5.7	2	10.19	2.1
KCHRGH02510-DIN6	2.5	1000.00	8.50	120	24	24	21.5	62.5	125	8	9	7	11	7	31.7	936.60	5.7	2	10.19	4.1
KCHRGH02520-DIN6	2.5	2000.00	8.50	240	24	24	21.5	62.5	125	16	9	7	11	7	31.7	1936.60	5.7	2	10.19	8.2
KCHRGH03005-DIN6	3	500.00	10.30	50	29	29	26.0	62.5	125	4	9	10	15	9	35.0	430.00	7.7	2	14.77	3.0
KCHRGH03010-DIN6	3	1000.00	10.30	100	29	29	26.0	62.5	125	8	9	10	15	9	35.0	930.00	7.7	2	14.77	6.0
KCHRGH03020-DIN6	3	2000.00	10.30	200	29	29	26.0	62.5	125	16	9	10	15	9	35.0	1930.00	7.7	2	14.77	12.0
KCHRGH04005-DIN6	4	506.67	13.80	38	39	39	35.0	62.5	125	4	12	10	15	9	33.3	433.00	7.7	2	26.49	5.5
KCHRGH04010-DIN6	4	1000.00	13.80	75	39	39	35.0	62.5	125	8	12	10	15	9	33.3	933.40	7.7	2	26.49	10.8
KCHRGH04020-DIN6	4	2000.00	13.80	150	39	39	35.0	62.5	125	16	12	10	15	9	33.3	1933.40	7.7	2	26.49	21.6
KCHRGH05005-DIN6	5	500.00	17.40	30	49	39	34.0	62.5	125	4	12	14	20	13	37.5	425.00	11.7	3	41.60	6.8
KCHRGH05010-DIN6	5	1000.00	17.40	60	49	39	34.0	62.5	125	8	12	14	20	13	37.5	925.00	11.7	3	41.60	13.6
KCHRGH05020-DIN6	5	2000.00	17.40	120	49	39	34.0	62.5	125	16	12	14	20	13	37.5	1925.00	11.7	3	41.60	27.2
KCHRGH06005-DIN6	6	500.00	20.90	25	59	49	43.0	62.5	125	4	16	18	26	17	37.5	425.00	15.7	3	60.11	10.3
KCHRGH06010-DIN6	6	1000.00	20.90	50	59	49	43.0	62.5	125	8	16	18	26	17	37.5	925.00	15.7	3	60.11	20.5
KCHRGH06020-DIN6	6	2000.00	20.90	100	59	49	43.0	62.5	125	16	16	18	26	17	37.5	1925.00	15.7	3	60.11	41.1
KCHRGH08005-DIN6	8	480.00	28.00	18	79	79	71.0	60.0	120	4	25	22	33	21	120.0	240.00	19.7	4	107.31	21.3
KCHRGH08010-DIN6	8	960.00	28.00	36	79	79	71.0	60.0	120	8	25	22	33	21	120.0	720.00	19.7	4	107.31	42.6
KCHRGH08020-DIN6	8	1920.00	28.00	72	79	79	71.0	60.0	120	16	25	22	33	21	120.0	1680.00	19.7	4	107.31	85.1
KCHRGH10005-DIN6	10	500.00	35.11	15	99	99	89.0	62.5	125	4	32	33	48	32	125.0	250.00	19.7	5	168.10	34.8
KCHRGH10010-DIN6	10	1000.00	35.11	30	99	99	89.0	62.5	125	8	32	33	48	32	125.0	750.00	19.7	5	168.10	69.6



KAHRG-DIN6



- NOTE:
 1) ALL THE SURFACES IN THE LEFT AND RIGHT VIEW ARE TRUE.
 2) ALL SURFACES HAVE Ra 0.8 SURFACE FINISH.
 3) ALL THE SURFACES ARE GROUND.

Dimension: mm

Series KAHRG-DIN6 Helical Teeth Ground Racks
Quality Grade DIN 6

Material SCM440
 Right Hand Angle 19°31'42"
 Hardness: HRC 50~55°
 Ground on all sides.
 Total Pitch Error: $F_p / 1000 \leq 0.036 \text{ mm}$
 $F_p / 2000 \leq 0.047 \text{ mm} (\leq 0.024 / 1000 \text{ mm})$

Code	Module	L	L2	No. of Teeth	B	A0	A1	D	I	No. of Holes	A	ød1	øD	E	D1	I1	ød2	f	F _{ta} kN	KG
KAHRG01505-DIN6	1.5	500.00	6.70	100	19	19	17.5	62.5	125	4	8	7	11	7	31.7	436.60	5.7	1.5	0.94	1.3
KAHRG01510-DIN6	1.5	1000.00	6.70	200	19	19	17.5	62.5	125	8	8	7	11	7	31.7	936.60	5.7	1.5	0.94	2.6
KAHRG02005-DIN6	2	500.00	8.50	75	24	24	22.0	62.5	125	4	8	7	11	7	31.7	436.60	5.7	2	1.58	2.1
KAHRG02010-DIN6	2	1000.00	8.50	150	24	24	22.0	62.5	125	8	8	7	11	7	31.7	936.60	5.7	2	1.58	4.1
KAHRG02020-DIN6	2	2000.00	8.50	300	24	24	22.0	62.5	125	16	8	7	11	7	31.7	1936.60	5.7	2	1.58	8.2
KAHRG02505-DIN6	2.5	500.00	8.50	60	24	24	21.5	62.5	125	4	9	7	11	7	31.7	436.60	5.7	2	1.98	2.1
KAHRG02510-DIN6	2.5	1000.00	8.50	120	24	24	21.5	62.5	125	8	9	7	11	7	31.7	936.60	5.7	2	1.98	4.1
KAHRG02520-DIN6	2.5	2000.00	8.50	240	24	24	21.5	62.5	125	16	9	7	11	7	31.7	1936.60	5.7	2	1.98	8.2
KAHRG03005-DIN6	3	500.00	10.30	50	29	29	26.0	62.5	125	4	9	10	15	9	35.0	430.00	7.7	2	2.87	3.0
KAHRG03010-DIN6	3	1000.00	10.30	100	29	29	26.0	62.5	125	8	9	10	15	9	35.0	930.00	7.7	2	2.87	6.0
KAHRG03020-DIN6	3	2000.00	10.30	200	29	29	26.0	62.5	125	16	9	10	15	9	35.0	1930.00	7.7	2	2.87	12.0
KAHRG04005-DIN6	4	506.67	13.80	38	39	39	35.0	62.5	125	4	12	10	15	9	33.3	433.00	7.7	2	5.15	5.5
KAHRG04010-DIN6	4	1000.00	13.80	75	39	39	35.0	62.5	125	8	12	10	15	9	33.3	933.40	7.7	2	5.15	10.8
KAHRG04020-DIN6	4	2000.00	13.80	150	39	39	35.0	62.5	125	16	12	10	15	9	33.3	1933.40	7.7	2	5.15	21.6
KAHRG05005-DIN6	5	500.00	17.40	30	49	39	34.0	62.5	125	4	12	14	20	13	37.5	425.00	11.7	3	8.08	6.8
KAHRG05010-DIN6	5	1000.00	17.40	60	49	39	34.0	62.5	125	8	12	14	20	13	37.5	925.00	11.7	3	8.08	13.6
KAHRG05020-DIN6	5	2000.00	17.40	120	49	39	34.0	62.5	125	16	12	14	20	13	37.5	1925.00	11.7	3	8.08	27.2
KAHRG06005-DIN6	6	500.00	20.90	25	59	49	43.0	62.5	125	4	16	18	26	17	37.5	425.00	15.7	3	11.68	10.3
KAHRG06010-DIN6	6	1000.00	20.90	50	59	49	43.0	62.5	125	8	16	18	26	17	37.5	925.00	15.7	3	11.68	20.5
KAHRG06020-DIN6	6	2000.00	20.90	100	59	49	43.0	62.5	125	16	16	18	26	17	37.5	1925.00	15.7	3	11.68	41.1
KAHRG08005-DIN6	8	480.00	28.00	18	79	79	71.0	60.0	120	4	25	22	33	21	120.0	240.00	19.7	4	20.85	21.3
KAHRG08010-DIN6	8	960.00	28.00	36	79	79	71.0	60.0	120	8	25	22	33	21	120.0	720.00	19.7	4	20.85	42.6
KAHRG08020-DIN6	8	1920.00	28.00	72	79	79	71.0	60.0	120	16	25	22	33	21	120.0	1680.00	19.7	4	20.85	85.1