



KAHGH-DIN6

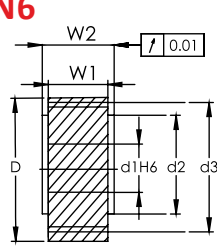


Fig. 1

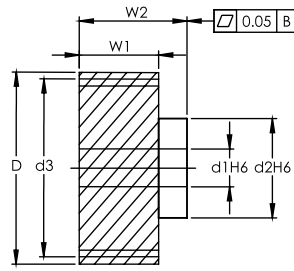
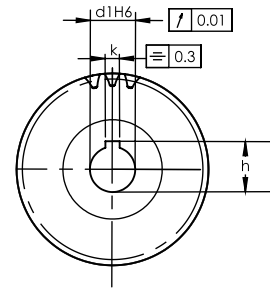


Fig. 2



Dimension: mm

- NOTE:
- 1) ALL THE SURFACES IN ALL THE VIEWS ARE TRUE.
 - 2) ALL THE SURFACES HAVE Ra 0.8 SURFACE FINISH.
 - 3) ALL THE SURFACES ARE GROUND.

Series KAHGH-DIN6 Helical Teeth Ground Pinions

Quality Grade DIN 6

Material SCM415/SCM440

Left Hand Angle 19°31'42"

Hardness: HRC 50~55°

Teeth Ground after Hardening

Code	Fig.	DIN	No. of Teeth	d1	d2	d3	D	W1	W2	k	h	F _{ta} kN	KG
Module 1.5													
KAHGH0150201	1	-DIN6	20	11	25	31.83	34.83	20	22	4	12.8	4.48	0.10
KAHGH0150202	1	-DIN6	20	13	25	31.83	34.83	20	22	5	15.3	4.48	0.10
KAHGH0150203	1	-DIN6	20	14	25	31.83	34.83	20	22	5	16.3	4.48	0.10
KAHGH0150204	1	-DIN6	20	16	25	31.83	34.83	20	22	5	18.3	4.48	0.10
KAHGH0150205	2	-DIN6	20	16	25	31.83	34.83	20	30	5	18.3	4.48	0.11
KAHGH0150206	2	-DIN6	20	16	24	31.83	34.83	20	50	*	*	4.48	0.15
KAHGH0150211	2	-DIN6	21	16	30	33.42	36.42	20	46	5	18.3	5.29	0.30
KAHGH0150221	2	-DIN6	22	16	25	35.01	38.01	20	30	5	18.3	5.56	0.14
KAHGH0150222	2	-DIN6	22	16	24	35.01	38.01	20	50	*	*	5.56	0.18
KAHGH0150251	2	-DIN6	25	16	30	39.78	42.78	20	46	5	18.3	6.37	0.18
KAHGH0150252	2	-DIN6	25	16	25	39.79	42.79	20	30	5	18.3	6.37	0.18
KAHGH0150253	2	-DIN6	25	16	24	39.79	42.79	20	50	*	*	6.37	0.22
KAHGH0150301	2	-DIN6	30	16	25	47.75	50.75	20	30	5	18.3	7.12	0.27
KAHGH0150302	2	-DIN6	30	16	24	47.75	50.75	20	50	*	*	7.12	0.31
Module 2													
KAHGH0200181	1	-DIN6	18	16	25	38.197	42.20	28	30	5	18.3	7.47	0.20
KAHGH0200201	1	-DIN6	20	19	30	42.44	46.40	28	30	6	21.8	8.36	0.20
KAHGH0200202	2	-DIN6	20	19	30	42.44	46.40	28	56	6	21.8	8.36	0.20
KAHGH0200203	1	-DIN6	20	20	30	42.44	46.40	28	30	6	22.8	8.36	0.20
KAHGH0200204	2	-DIN6	20	22	36	42.44	46.40	28	56	6	24.8	8.36	0.20
KAHGH0200205	1	-DIN6	20	22	30	42.44	46.40	28	30	6	24.8	8.36	0.20
KAHGH0200206	2	-DIN6	20	22	36	42.44	46.40	28	36	6	24.8	8.36	0.20
KAHGH0200207	2	-DIN6	20	22	35	42.44	46.44	25	40	6	24.8	8.36	0.26
KAHGH0200208	2	-DIN6	20	22	30	42.44	46.44	25	60	*	*	8.36	0.29
KAHGH0200211	1	-DIN6	21	16	25	44.56	48.60	28	30	5	18.3	8.81	0.30
KAHGH0200212	2	-DIN6	21	22	36	44.56	48.60	28	30	6	24.8	8.81	0.30
KAHGH0200221	1	-DIN6	22	19	30	46.69	50.70	28	30	6	21.8	10.38	0.30
KAHGH0200222	2	-DIN6	22	19	30	46.69	50.70	28	56	6	21.8	10.38	0.30
KAHGH0200223	1	-DIN6	22	22	30	46.69	50.70	28	30	6	24.8	10.38	0.30
KAHGH0200224	2	-DIN6	22	22	36	46.69	50.70	28	56	6	24.8	10.38	0.30
KAHGH0200225	2	-DIN6	22	22	35	46.69	50.69	25	40	6	24.8	9.27	0.32
KAHGH0200226	2	-DIN6	22	22	35	46.69	50.69	25	60	*	*	9.27	0.35
KAHGH0200251	1	-DIN6	25	19	30	53.05	57.10	28	30	6	21.8	11.90	0.40
KAHGH0200252	2	-DIN6	25	19	30	53.05	57.10	28	56	6	21.8	11.90	0.40
KAHGH0200253	1	-DIN6	25	20	30	53.05	57.10	28	30	6	22.8	11.90	0.40
KAHGH0200254	1	-DIN6	25	22	30	53.05	57.10	28	30	6	24.8	11.90	0.40
KAHGH0200255	2	-DIN6	25	22	36	53.05	57.10	28	56	6	24.8	11.90	0.40
KAHGH0200256	1	-DIN6	25	25	36	53.05	57.10	28	30	6	27.8	11.90	0.40
KAHGH0200257	2	-DIN6	25	22	35	53.05	57.05	25	40	6	24.8	10.62	0.42
KAHGH0200258	2	-DIN6	25	22	30	53.05	57.05	25	60	*	*	10.62	0.45
KAHGH0200281	1	-DIN6	28	19	30	59.42	63.40	28	30	6	21.8	13.06	0.40
KAHGH0200282	2	-DIN6	28	19	30	59.42	63.40	28	56	6	21.8	13.06	0.40
KAHGH0200283	1	-DIN6	28	22	30	59.42	63.40	28	30	6	24.8	13.06	0.40
KAHGH0200284	2	-DIN6	28	22	36	59.42	63.40	28	56	6	24.8	13.06	0.40





KAHGH-DIN6

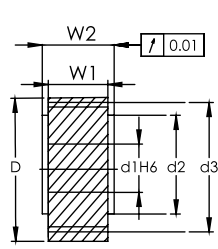


Fig. 1

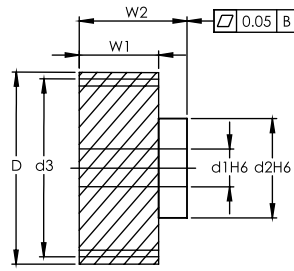
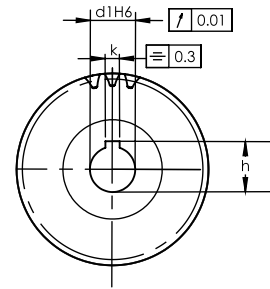


Fig. 2



Dimension: mm

- NOTE:
- 1) ALL THE SURFACES IN ALL THE VIEWS ARE TRUE.
 - 2) ALL THE SURFACES HAVE Ra 0.8 SURFACE FINISH.
 - 3) ALL THE SURFACES ARE GROUND.

Helical

DIN

Series KAHGH-DIN6 Helical Teeth Ground Pinions

Quality Grade DIN 6

Material SCM415/SCM440

Left Hand Angle 19°31'42"

Hardness: HRC 50~55°

Teeth Ground after Hardening

Code	Fig.	DIN	No. of Teeth	d1	d2	d3	D	W1	W2	k	h	F _{ta} kN	KG
Module 2													
KAHGH0200285	1	-DIN6	28	35	48	59.42	63.40	28	30	10	38.3	13.06	0.40
KAHGH0200301	1	-DIN6	30	16	25	63.66	67.70	28	30	5	18.3	13.30	0.70
KAHGH0200302	1	-DIN6	30	20	30	63.66	67.70	28	30	6	22.8	13.30	0.70
KAHGH0200303	2	-DIN6	30	22	36	63.66	67.70	28	56	6	24.8	13.30	0.70
KAHGH0200304	1	-DIN6	30	25	36	63.66	67.70	28	30	8	28.3	13.30	0.70
KAHGH0200305	1	-DIN6	30	30	45	63.66	67.70	28	30	8	33.3	13.30	0.70
KAHGH0200306	2	-DIN6	30	30	50	63.66	67.70	28	60	8	33.3	13.30	0.70
KAHGH0200307	2	-DIN6	30	32	55	63.66	67.70	28	65	10	35.3	13.30	0.70
KAHGH0200308	2	-DIN6	30	22	35	63.66	67.66	25	40	6	24.8	11.87	0.61
KAHGH0200309	2	-DIN6	30	22	30	63.66	67.66	25	60	*	*	11.87	0.64
KAHGH0200321	1	-DIN6	32	20	30	67.91	71.90	28	30	6	22.8	13.49	0.70
KAHGH0200322	1	-DIN6	32	22	30	67.91	71.90	28	30	6	24.8	13.49	0.70
KAHGH0200323	2	-DIN6	32	22	36	67.91	71.90	28	56	6	24.8	13.49	0.70
KAHGH0200324	1	-DIN6	32	25	36	67.91	71.90	28	30	8	28.3	13.49	0.70
KAHGH0200325	1	-DIN6	32	35	48	67.91	71.90	28	30	10	38.3	13.49	0.70
KAHGH0200361	1	-DIN6	36	35	48	76.39	80.40	28	30	10	38.3	13.84	0.80
KAHGH0200391	2	-DIN6	39	32	55	82.76	86.80	28	65	10	35.3	14.06	1.40
KAHGH0200401	1	-DIN6	40	35	48	84.88	88.90	28	30	10	38.3	14.13	1.20
MODULE 3													
KAHGH0300181	1	-DIN6	18	25	36	54.00	60.00	28	30	8	28.3	12.51	0.40
KAHGH0300201	1	-DIN6	20	25	36	60.00	66.00	28	30	8	28.3	14.00	0.50
KAHGH0300202	2	-DIN6	20	25	44	63.66	69.70	28	60	8	28.3	14.00	1.10
KAHGH0300203	1	-DIN6	20	30	45	63.66	69.70	28	30	8	33.3	14.00	0.50
KAHGH0300204	2	-DIN6	20	30	50	63.66	69.70	28	60	8	33.3	14.00	1.10
KAHGH0300205	2	-DIN6	20	32	55	63.66	69.70	28	65	10	35.3	14.00	1.20
KAHGH0300206	1	-DIN6	20	35	48	63.66	69.70	28	30	10	38.3	14.00	0.50
KAHGH0300207	2	-DIN6	20	22	35	63.66	69.66	30	40	6	24.8	15.06	0.69
KAHGH0300208	2	-DIN6	20	22	30	63.66	69.66	30	65	*	*	15.06	0.74
KAHGH0300209	2	-DIN6	20	32	50	63.66	69.66	30	60	10	35.3	15.06	0.81
KAHGH03002010	2	-DIN6	20	32	44	63.66	69.66	30	70	*	*	15.06	0.78
KAHGH0300221	1	-DIN6	22	25	36	70.03	76.00	28	30	8	28.3	17.65	0.60
KAHGH0300222	1	-DIN6	22	30	45	70.03	76.00	28	30	8	33.3	17.65	0.60
KAHGH0300223	2	-DIN6	22	32	55	70.03	76.00	28	65	10	35.3	17.65	1.40
KAHGH0300224	1	-DIN6	22	35	48	70.03	76.00	28	30	10	38.3	17.65	0.60
KAHGH0300225	2	-DIN6	22	40	62	70.03	76.00	28	65	12	43.3	17.65	1.40
KAHGH0300226	2	-DIN6	22	22	35	70.03	76.03	30	40	6	24.8	16.68	0.85
KAHGH0300227	2	-DIN6	22	22	30	70.03	76.03	30	65	*	*	16.68	0.90
KAHGH0300228	2	-DIN6	22	32	50	70.03	76.03	30	60	10	35.3	16.68	0.96
KAHGH0300229	2	-DIN6	22	32	44	70.03	76.03	30	70	*	*	16.68	0.93
KAHGH0300251	2	-DIN6	25	22	36	79.58	85.60	28	56	6	24.8	19.01	1.50
KAHGH0300252	1	-DIN6	25	25	36	79.58	85.60	28	30	8	28.3	19.01	0.80
KAHGH0300253	2	-DIN6	25	25	44	79.58	85.60	28	60	8	28.3	19.01	1.60
KAHGH0300254	1	-DIN6	25	30	45	79.58	85.60	28	30	8	33.3	19.01	0.80
KAHGH0300255	2	-DIN6	25	30	50	79.58	85.60	28	60	8	33.3	19.01	1.60



KAHGH-DIN6

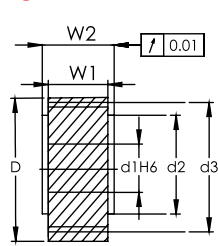


Fig. 1

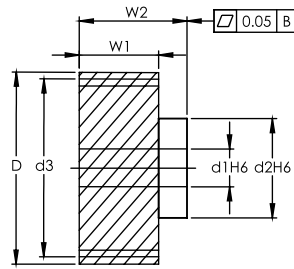
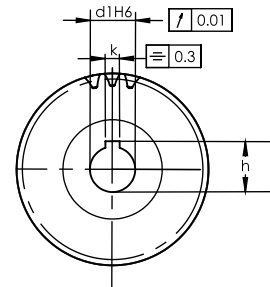


Fig. 2



Dimension: mm

- NOTE:
 1) ALL THE SURFACES IN ALL THE VIEWS ARE TRUE.
 2) ALL THE SURFACES HAVE Ra 0.8 SURFACE FINISH.
 3) ALL THE SURFACES ARE GROUND.

Series KAHGH-DIN6 Helical Teeth Ground Pinions Quality Grade DIN 6

Material SCM415/SCM440
 Left Hand Angle 19°31'42"
 Hardness: HRC 50~55°
 Teeth Ground after Hardening

Helical
DIN

Code	Fig.	DIN	No. of Teeth	d1	d2	d3	D	W1	W2	k	h	F _{ta} kN	KG
Module 3													
KAHGH0300256	2	-DIN6	25	32	55	79.58	85.60	28	65	10	35.3	19.01	1.80
KAHGH0300257	1	-DIN6	25	35	48	79.58	85.60	28	30	10	38.3	19.01	0.80
KAHGH0300258	2	-DIN6	25	35	55	79.58	85.60	28	65	10	38.3	19.01	1.80
KAHGH0300259	1	-DIN6	25	40	70	79.58	85.60	28	50	12	43.3	19.01	1.40
KAHGH03002510	2	-DIN6	25	40	62	79.58	85.60	28	65	12	43.3	19.01	1.80
KAHGH03002511	2	-DIN6	25	22	35	79.58	85.58	30	40	6	24.8	20.37	1.11
KAHGH03002512	2	-DIN6	25	22	30	79.58	85.58	30	65	*	*	20.37	1.17
KAHGH03002513	2	-DIN6	25	32	50	79.58	85.58	30	60	10	35.3	20.37	1.23
KAHGH03002514	2	-DIN6	25	32	44	79.58	85.58	30	70	*	*	20.37	1.20
KAHGH0300281	2	-DIN6	28	32	55	89.13	95.10	28	65	10	35.3	19.59	2.20
KAHGH0300282	2	-DIN6	28	40	62	89.13	95.10	28	65	12	43.3	19.59	2.20
KAHGH0300301	2	-DIN6	30	22	35	95.49	101.49	30	40	6	24.8	21.37	1.62
KAHGH0300302	2	-DIN6	30	22	30	95.49	101.49	30	65	*	*	21.37	1.67
KAHGH0300303	2	-DIN6	30	32	50	95.49	101.49	30	60	10	35.3	21.37	1.74
KAHGH0300304	2	-DIN6	30	32	44	95.49	101.49	30	70	*	*	21.37	1.71
KAHGH0300321	2	-DIN6	32	32	55	101.86	107.85	28	65	10	35.3	20.24	2.80
KAHGH0300322	2	-DIN6	32	40	62	101.86	107.85	28	65	12	43.3	20.24	2.00
MODULE 4													
KAHGH0400151	1	-DIN6	15	35	52	63.66	71.70	40	50	10	38.3	17.53	0.80
KAHGH0400181	2	-DIN6	18	32	55	76.39	84.40	40	75	10	35.3	23.92	1.60
KAHGH0400201	1	-DIN6	20	35	52	84.88	92.90	40	50	10	38.3	26.78	1.30
KAHGH0400202	1	-DIN6	20	45	65	84.88	92.90	40	50	14	48.8	26.78	1.30
KAHGH0400203	2	-DIN6	20	32	50	84.88	92.88	40	60	10	35.3	26.78	1.67
KAHGH0400204	2	-DIN6	20	32	44	84.88	92.88	40	80	*	*	26.78	1.73
KAHGH0400205	2	-DIN6	20	40	60	84.88	92.88	40	85	12	43.3	26.78	1.89
KAHGH0400206	2	-DIN6	20	40	50	84.88	92.88	40	85	*	*	26.78	1.58
KAHGH0400211	2	-DIN6	21	32	55	89.13	97.10	40	75	10	35.3	28.23	2.20
KAHGH0400212	2	-DIN6	21	35	55	89.13	97.10	40	75	10	38.3	28.23	2.20
KAHGH0400213	2	-DIN6	21	40	62	89.13	97.10	40	75	12	43.3	28.23	2.20
KAHGH0400214	2	-DIN6	21	45	68	89.13	97.10	40	75	14	48.8	28.23	2.20
KAHGH0400221	1	-DIN6	22	35	52	93.37	101.40	40	50	10	38.3	29.66	1.60
KAHGH0400222	1	-DIN6	22	45	65	93.37	101.40	40	50	14	48.8	29.66	1.60
KAHGH0400223	2	-DIN6	22	32	50	93.37	101.37	40	60	10	35.3	29.66	2.04
KAHGH0400224	2	-DIN6	22	32	44	93.37	101.37	40	80	*	*	29.66	2.10
KAHGH0400225	2	-DIN6	22	40	60	93.37	101.37	40	85	12	43.3	29.66	2.26
KAHGH0400226	2	-DIN6	22	40	50	93.37	101.37	40	85	*	*	29.66	1.95
KAHGH0400241	2	-DIN6	24	32	55	101.86	109.90	40	75	10	35.3	35.79	2.80
KAHGH0400242	2	-DIN6	24	35	55	101.86	109.90	40	75	10	38.3	35.79	2.80
KAHGH0400243	2	-DIN6	24	40	62	101.86	109.90	40	75	12	43.3	35.79	2.80
KAHGH0400244	2	-DIN6	24	45	68	101.86	109.90	40	75	14	48.8	35.79	2.80
KAHGH0400245	2	-DIN6	24	55	80	101.86	109.90	40	80	16	59.3	35.79	3.00
KAHGH0400251	1	-DIN6	25	35	52	106.10	114.10	40	50	10	38.3	36.22	2.00
KAHGH0400252	1	-DIN6	25	45	65	106.10	114.10	40	50	14	48.8	36.22	2.00



KAHGH-DIN6

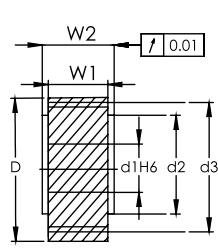


Fig. 1

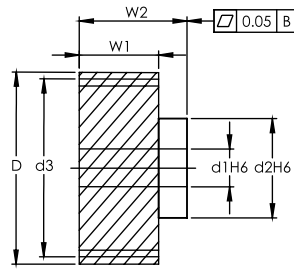
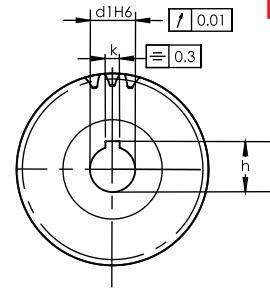


Fig. 2



Dimension: mm

- NOTE:
- 1) ALL THE SURFACES IN ALL THE VIEWS ARE TRUE.
 - 2) ALL THE SURFACES HAVE Ra 0.8 SURFACE FINISH.
 - 3) ALL THE SURFACES ARE GROUND.

Helical

DIN

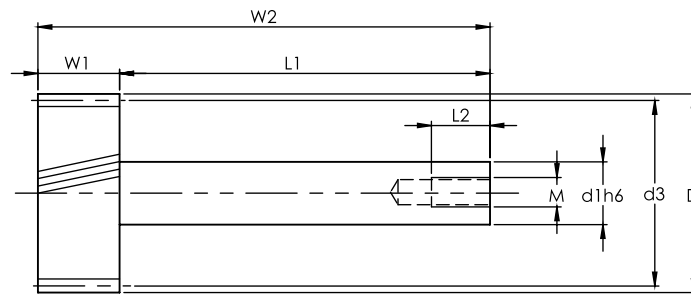
Series KAHGH-DIN6 Helical Teeth Ground Pinions
Quality Grade DIN 6

Material SCM415/SCM440
Left Hand Angle 19°31'42"
Hardness: HRC 50~55°
Teeth Ground after Hardening

Code	Fig.	DIN	No. of Teeth	d1	d2	d3	D	W1	W2	k	h	F _{ta} kN	KG
Module 4													
KAHGH0400253	2	-DIN6	25	55	80	106.10	114.10	40	80	16	59.3	36.22	3.20
KAHGH0400254	2	-DIN6	25	32	50	106.10	114.10	40	60	10	35.3	36.22	2.66
KAHGH0400255	2	-DIN6	25	32	44	106.10	114.10	40	80	*	*	36.22	2.72
KAHGH0400256	2	-DIN6	25	40	60	106.10	114.10	40	85	12	43.3	36.22	2.88
KAHGH0400257	2	-DIN6	25	40	50	106.10	114.10	40	85	*	*	36.22	2.58
KAHGH0400301	2	-DIN6	30	32	50	127.32	135.32	40	60	10	35.3	38.00	3.88
KAHGH0400302	2	-DIN6	30	32	44	127.32	135.32	40	80	10	*	38.00	3.94
KAHGH0400303	2	-DIN6	30	40	60	127.32	135.32	40	85	12	43.3	38.00	4.10
KAHGH0400304	2	-DIN6	30	40	50	127.32	135.32	40	85	*	*	38.00	3.80
Module 5													
KAHGH0500181	2	-DIN6	18	45	68	95.49	105.50	50	85	14	48.8	37.38	2.90
KAHGH0500201	2	-DIN6	20	40	60	106.10	116.10	50	85	12	43.3	41.84	3.34
KAHGH0500202	2	-DIN6	20	40	50	106.10	116.10	50	90	*	*	41.84	3.16
KAHGH0500221	2	-DIN6	22	40	60	116.71	126.71	50	85	12	43.3	46.34	4.06
KAHGH0500222	2	-DIN6	22	40	50	116.71	126.71	50	90	*	*	46.34	3.88
KAHGH0500241	2	-DIN6	24	45	68	127.32	137.30	50	85	14	48.8	55.93	4.90
KAHGH0500242	2	-DIN6	24	55	80	127.32	137.30	50	90	16	59.3	55.93	5.20
KAHGH0500243	2	-DIN6	24	75	110	127.32	137.30	50	110	20	79.9	55.93	6.40
KAHGH0500251	2	-DIN6	25	40	60	132.63	142.63	50	85	12	43.3	56.58	5.28
KAHGH0500252	2	-DIN6	25	40	50	132.63	142.63	50	90	*	*	56.58	5.10
KAHGH0500301	2	-DIN6	30	40	60	159.16	169.16	50	85	12	43.3	59.37	7.66
KAHGH0500302	2	-DIN6	30	40	50	159.16	169.16	50	90	*	*	59.37	7.48
Module 6													
KAHGH0600201	2	-DIN6	20	55	80	127.32	139.30	60	100	16	59.3	60.26	6.00
KAHGH0600202	2	-DIN6	20	75	110	127.32	139.30	60	120	20	79.9	60.26	7.20
KAHGH0600203	2	-DIN6	20	55	80	127.32	139.32	60	85	16	59.3	60.26	5.28
KAHGH0600204	2	-DIN6	20	55	68	127.32	139.32	60	105	*	*	60.26	5.25
KAHGH0600221	2	-DIN6	22	55	80	140.06	152.06	60	85	16	59.3	66.74	6.53
KAHGH0600222	2	-DIN6	22	55	68	140.06	152.06	60	105	*	*	66.74	6.50
KAHGH0600251	2	-DIN6	25	55	80	159.16	171.20	60	100	16	59.3	81.49	9.00
KAHGH0600252	2	-DIN6	25	75	110	159.16	171.20	60	120	20	79.9	81.49	10.80
KAHGH0600253	2	-DIN6	25	55	80	159.16	171.16	60	85	16	59.3	81.49	8.64
KAHGH0600254	2	-DIN6	25	55	68	159.16	171.16	60	105	*	*	81.49	8.61
KAHGH0600301	2	-DIN6	30	55	80	190.99	212.99	60	85	16	59.3	85.49	12.74
KAHGH0600302	2	-DIN6	30	55	68	190.99	212.99	60	105	*	*	85.49	12.71
Module 8													
KAHGH0800181	2	-DIN6	18	75	110	152.79	168.80	80	140	20	79.9	95.68	11.00
KAHGH0800202	2	-DIN6	20	85	125	169.80	185.80	80	145	22	90.4	107.12	14.00
Module 10													
KAHGH1000201	2	-DIN6	20	85	125	212.21	232.20	100	165	22	90.4	167.38	26.00



KAHGH-L-DIN6



NOTE:
1) ALL THE SURFACES HAVE Ra 0.8 SURFACE FINISH.
2) ALL THE SURFACES ARE GROUND.

Dimension: mm

Helical

DIN

Series KAHGH-L-DIN6 Helical Teeth Ground Pinion Shaft
Quality Grade DIN 6

Material SCM415 / SCM440
Left Hand Angle 19°31'42"
Hardness: HRC 50~55°
Teeth Gound after Hardening

Table with columns: Code, DIN, Module, No. of Teeth, d1, d3, D, W1, W2, L1, L2, Hole, Fta (kN), KG. It lists specifications for Module 1.5, 2.5, and 3.