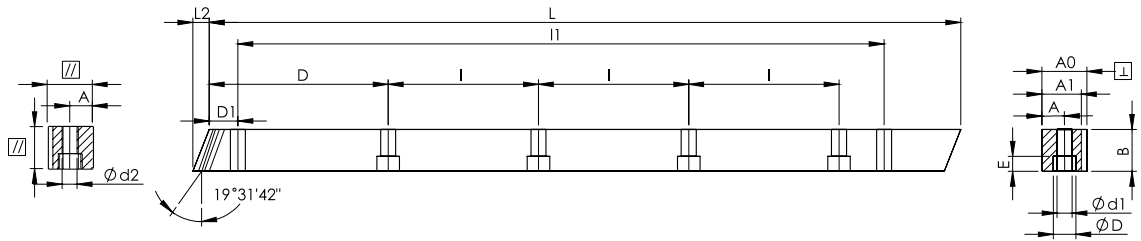




### KCHRM-DIN8



- NOTE:
- 1) ALL THE SURFACES IN THE LEFT AND RIGHT VIEW ARE TRUE.
  - 2) ALL SURFACES HAVE Ra 1.6 SURFACE FINISH.
  - 3) ALL THE SURFACES ARE MILLED.

Dimension: mm

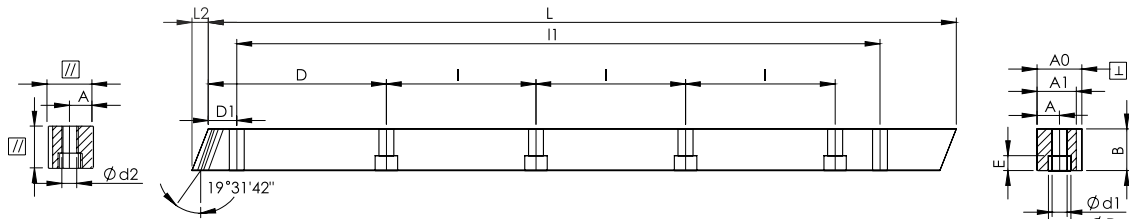
Series KCHRM-DIN8 Helical Milled Racks  
Quality Grade DIN 8

Material S50C  
Right Hand Angle 19°31'42"  
Hardness: HRC 50~55°  
Total Pitch Error:  $F_p / 1000 \leq 0.060$  mm  
 $F_p / 2000 \leq 0.080$  mm

Code	Module	L	L2	No. of Teeth	B	A0	A1	D	I	No. of Holes	A	ød1	øD	E	D1	I1	ød2	f	F <sub>ta</sub> kN	KG
KCHRM01510-DIN8	1.5	1000	6.00	200	17	17	15.5	62.5	125	8	7	6	9.5	6	31.7	936.6	5.70	1.5	0.64	2.1
KCHRM02010-DIN8	2	1000	8.90	150	25	24	22	62.5	125	8	8	7	11	7	31.7	936.6	5.70	2	1.25	4.3
KCHRM03010-DIN8	3	1000	10.60	100	30	29	26	62.5	125	8	9	10	15	9	35.0	930.0	7.70	2	2.24	6.2
KCHRM04010-DIN8	4	1000	14.20	75	40	39	35	62.5	125	8	12	10	15	9	33.3	933.4	7.70	2	3.99	11.1
KCHRM05010-DIN8	5	1000	17.40	60	49	39	34	62.5	125	8	12	14	20	13	37.5	925.0	11.70	3	6.11	13.6
KCHRM06010-DIN8	6	1000	20.90	50	59	49	43	62.5	125	8	16	18	26	17	37.5	925.0	15.70	3	8.83	20.5
KCHRM08010-DIN8	8	960	28.00	36	79	79	71	60	120	8	25	22	33	21	120.0	720.0	19.70	4	15.76	42.6
KCHRM08020-DIN8	8	1920	28.00	72	79	79	71	60	120	16	25	22	33	21	120.0	1680.0	19.70	4	15.76	85.1
KCHRM10010-DIN8	10	1000	35.11	30	99	99	89	62.5	125	8	32	33	48	32	125.0	750.0	19.70	5	24.69	69.6



KCHRMH-DIN10



- NOTE:
- 1) ALL THE SURFACES IN THE LEFT AND RIGHT VIEW ARE TRUE.
  - 2) ALL SURFACES HAVE Ra 2.4 SURFACE FINISH.
  - 3) ALL THE SURFACES ARE GROUND.

Dimension: mm

Series KCHRMH-DIN 10 Helical Hardened Racks  
Quality Grade DIN 10

Material S50C  
Right Hand Angle 19°31'42"  
Hardness; HRC 50~55°  
Surfaces; Sand-blasted.  
Total Pitch Error:  $F_p / 1000 \leq 0.15$  mm

Code	Module	L	L2	No. of Teeth	B	A0	A1	D	I	No. of Holes	A	ød1	øD	E	D1	I1	ød2	f	F <sub>ta</sub> kN	KG
KCHRMH01510-DIN10	1.5	1000	6.00	200	17	17	15.5	62.5	125	8	7	6	9.5	7	31.7	936.6	5.7	3.18	2.1	
KCHRMH02010-DIN10	2	1000	8.50	150	24	24	22	62.5	125	8	8	7	11	7	31.7	936.6	5.7	5.98	4.1	
KCHRMH02020-DIN10	2	2000	8.50	300	24	24	22	62.5	125	16	8	7	11	7	31.7	1936.6	5.7	5.98	8.2	
KCHRMH03010-DIN10	3	1000	10.30	100	29	29	26	62.5	125	8	9	10	15	9	35.0	930.0	7.7	10.83	6.0	
KCHRMH03020-DIN10	3	2000	10.30	200	29	29	26	62.5	125	16	9	10	15	9	35.0	1930.0	7.7	10.83	12.0	
KCHRMH04010-DIN10	4	1000	13.80	75	39	39	35	62.5	125	8	12	10	15	9	33.3	933.4	7.7	19.42	10.8	
KCHRMH04020-DIN10	4	2000	13.80	150	39	39	35	62.5	125	16	12	10	15	9	33.3	1933.4	7.7	19.42	21.6	
KCHRMH05010-DIN10	5	1000	17.40	60	49	49	34	62.5	125	8	12	14	20	13	37.5	925.0	11.7	30.51	13.6	
KCHRMH05020-DIN10	5	2000	17.40	120	49	49	34	62.5	125	16	12	14	20	13	37.5	1925.0	11.7	30.51	27.2	
KCHRMH06010-DIN10	6	1000	20.90	50	59	59	43	62.5	125	8	16	18	26	17	37.5	925.0	15.7	44.08	20.5	
KCHRMH06020-DIN10	6	2000	20.90	100	59	59	43	62.5	125	16	16	18	26	17	37.5	1925.0	15.7	44.08	41.1	
KCHRMH08010-DIN10	8	960	28.00	36	79	79	71	60	120	8	25	22	33	21	120.0	720.0	19.7	78.69	42.6	
KCHRMH08020-DIN10	8	1920	28.00	72	79	79	71	60	120	16	25	22	33	21	120.0	1680.0	19.7	78.69	85.1	
KCHRMH10010-DIN10	10	1000	35.11	30	99	99	89	62.5	125	8	32	33	48	32	125.0	750.0	19.7	123.27	69.6	