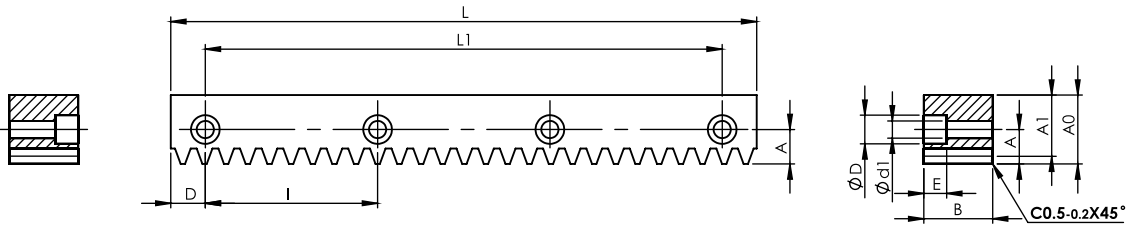




KASRGH-CP-DIN6



NOTE:
 1) ALL THE SURFACES IN LEFT AND RIGHT VIEW ARE TRUE.
 2) ALL THE SURFACES HAVE Ra 0.8 SURFACE FINISH.
 3) ALL THE SURFACES ARE GROUND.

Dimension: mm

Guideway Racks

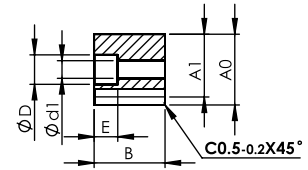
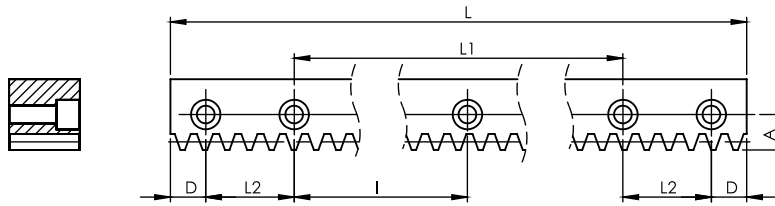
Series KASRGH-CP-DIN6 Ground Guideway Racks
Quality Grade DIN 6

Material SCM440
Hardness: HRC 50~55°
4 Sides Ground and Teeth Ground after hardening.
Total Pitch Error: $F_p / 1000 \leq 0.036$ mm

Code	CP	No. of Teeth	L	L1	Module	B	A0	A1	D	I	A	øD	ød1	E	F _{ta} kN	KG
KASRGH-CP05010-1-DIN6	5	206	1030	1000	1.5915	14.5	24.5	22.91	15	100	11.5	11	7	7	2.74	2.2
KASRGH-CP05010-2-DIN6	5	206	1030	1000	1.5915	19.5	29.5	27.91	15	100	14.0	15	9	9	3.68	3.8
KASRGH-CP07512-1-DIN6	7.5	164	1230	1200	2.3873	24.7	33.0	30.61	15	100	14.5	15	9	9	6.99	6.3
KASRGH-CP10012-1-DIN6	10	123	1230	1200	3.1831	34.6	46.6	43.42	15	100	18.0	18	11	11	13.06	12.5



KASRGH-CP-L-DIN6



Dimension: mm

NOTE:

- 1) ALL THE SURFACES IN THE LEFT AND RIGHT VIEW ARE TRUE.
- 2) ALL THE SURFACES HAVE Ra 0.8 SURFACE FINISH.
- 3) ALL THE SURFACES ARE GROUND.

Series KASRGH-CP-L-DIN6 Ground Guideway Racks
Quality Grade DIN 6

Material SCM440
Hardness: HRC 50~55°
4 Sides Ground and Teeth Ground after hardening.
Total Pitch Error: $F_p/1000 \leq 0.036$ mm

Code	CP	No. of Teeth	L	L1	L2	Module	B	A0	A1	D	I	A	$\varnothing D$	$\varnothing d1$	E	F_{ta} kN	KG
KASRGH-CP050-1200-1-DIN6	5	240	1200	1100	35	1.5915	14.5	24.5	22.91	15	100	11.5	11	7	7	2.74	2.6
KASRGH-CP050-1200-2-DIN6	5	240	1200	1100	35	1.5915	19.5	29.5	27.91	15	100	14.0	15	9	9	3.68	4.6
KASRGH-CP075-1200-1-DIN6	7.5	160	1200	1100	35	2.3873	24.7	33.0	30.61	15	100	14.5	15	9	9	6.99	7.6
KASRGH-CP100-1200-1-DIN6	10	120	1200	1100	35	3.1831	34.6	46.6	43.42	15	100	18.0	18	11	11	13.06	15.0