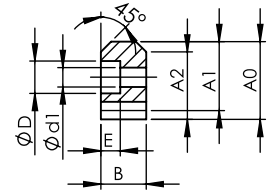


### KCHVM-L-DIN8



NOTE:  
 1) ALL THE SURFACES IN LEFT AND RIGHT VIEW ARE TRUE.  
 2) ALL THE SURFACES ARE MILLED.

Dimension: mm

Series KCHVM-L-DIN8 Helical V Type Milled Guideway Racks  
 Quality Grade DIN 8

Material S50C  
 Right Hand Angle 19°31'42"  
 Hardness HRC: 50~55°  
 Total Pitch Error:  $F_p/1000 \leq 0.060$  mm

Code	Module	No. of Teeth	L0	L	L1	L2	B	A0	A1	D	I	A	øD	ød1	E	A2	F <sub>ta</sub> kN	KG
KCHVM-015-1200-1-DIN8	1.5	240	1205.14	1200	1100	35	14.5	24.5	23.00	15	100	11.5	11	7	7	20.0	0.54	2.6
KCHVM-015-1200-2-DIN8	1.5	240	1206.92	1200	1100	35	19.5	29.5	28.00	15	100	14.0	15	9	9	23.5	0.73	3.2
KCHVM-025-1200-1-DIN8	2.5	144	1208.76	1200	1100	35	24.7	33.0	30.50	15	100	14.5	15	9	9	25.2	1.54	5.8
KCHVM-030-1200-1-DIN8	3	120	1212.27	1200	1100	35	34.6	46.6	43.60	15	100	18.0	18	11	11	36.7	2.59	11.4