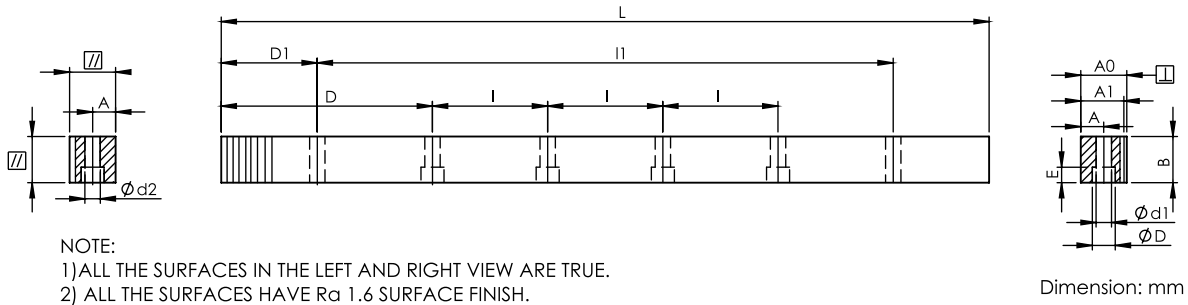




### KCSRMQ-DIN8



Series KCSRMQ-DIN8 Straight Milled Quenched & Tempered Racks  
 Quality Grade DIN 8

Material S50C  
 Hardness; HRC 50~55°  
 Total Pitch Error:  $F_p / 1000 \leq 0.060$  mm  
 $F_p / 2000 \leq 0.080$  mm



Code	Module	L	No. of Teeth	B	A0	A1	D	I	No. of Holes	A	ød1	øD	E	D1	I1	ød2	f	F <sub>ta</sub> kN	KG
KCSRMQ01510-DIN8	1.5	999.03	212	17	17	15.5	62.44	124.88	8	7	6	9.5	7	29	941.00	5.7	1.5	0.35	1.9
KCSRMQ02010-DIN8	2	1005.31	160	25	24	22	62.83	125.66	8	8	7	11	7	31.3	942.70	5.7	2	0.68	4.1
KCSRMQ03010-DIN8	3	1017.88	108	30	29	26	63.62	127.23	8	9	10	15	9	34.4	949.10	7.7	2	1.22	5.9
KCSRMQ04010-DIN8	4	1005.31	80	40	39	35	62.83	125.66	8	12	10	15	9	37.5	930.30	7.7	2	2.18	10.5
KCSRMQ05010-DIN8	5	1005.31	64	49	39	34	62.83	125.66	8	12	14	20	13	30.1	945.00	11.7	3	3.33	12.9
KCSRMQ06010-DIN8	6	1017.88	54	59	49	43	63.62	127.23	8	16	18	26	17	31.4	955.00	15.7	3	4.82	19.7
KCSRMQ08010-DIN8	8	1005.31	40	79	79	71	62.83	125.66	8	25	22	33	21	26.6	952.00	19.7	4	8.60	42.1
KCSRMQ10010-DIN8	10	1005.31	32	99	99	89	62.83	125.66	8	32	33	48	32	125.67	754.00	19.7	5	13.47	66.1